

TECHNICAL DATA INCLUDED IN THIS BROCHURE MAY BE CHANGE FROM TIME TO TIME DUE TO THE PRODUCT IMPROVEMENTS UNDERTAKES BY THE MANUFACTURER. THE COMPANY RESERVES THE UNCONDITIONAL RIGHTS TO IMPLEMENT SUCH CHANGES WITHOUT REFERENCE TO THIRD PARTIES.



CDL/CDLF

50HZ Vertical Multistage Pump



About Us

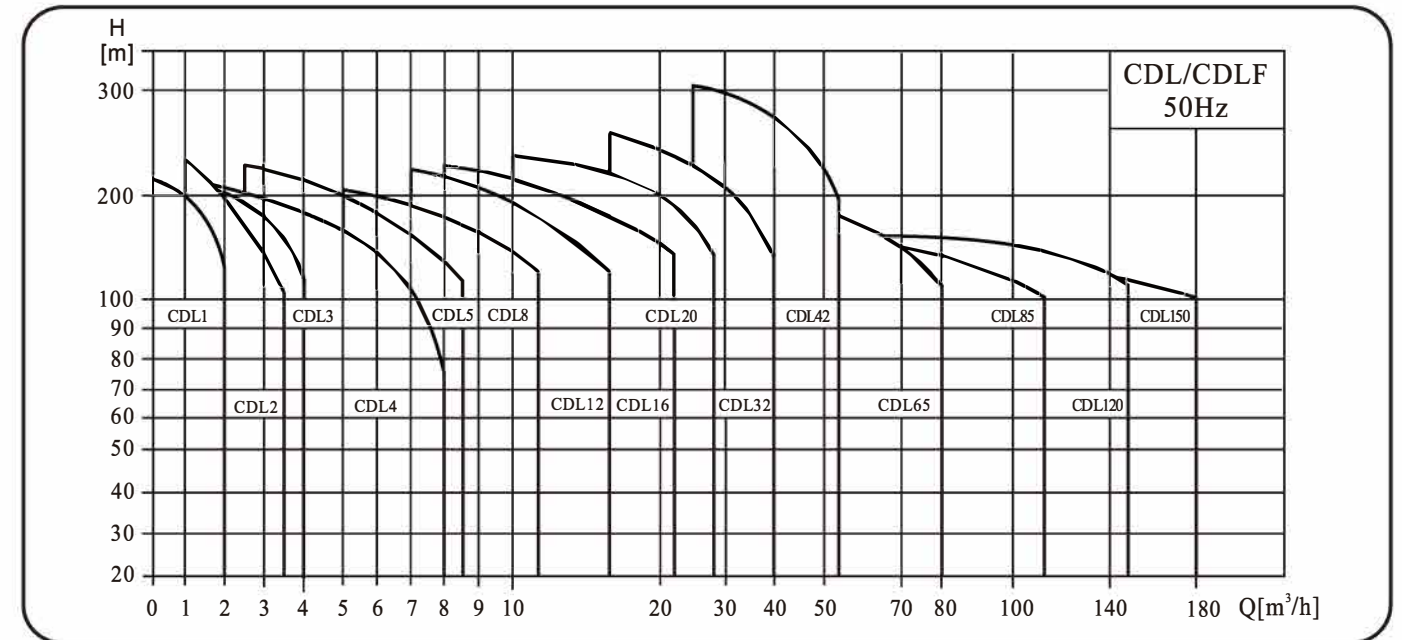
Zhejiang Zhili Water Supply Equipment Co., Ltd. is a specialized manufacturer of vertical multistage centrifugal pumps. Backed by our robust physical factory and rigorous testing protocols, we deliver high-pressure, energy-efficient pumping solutions for demanding industrial applications. We focus on engineering stability, ensuring every unit provides uncompromising performance in water treatment, reverse osmosis, and commercial water supply systems worldwide.



contents

Performance scope.....	1
General data.....	2
Pressure.....	3
NPSH.....	4
Curve description.....	5
Exploded view.....	06-09
CDL,CDLF1.....	10-11
CDL,CDLF2.....	12-13
CDL,CDLF3.....	14-15
CDL,CDLF4.....	16-17
CDL,CDLF5.....	18-19
CDL,CDLF8.....	20-21
CDL,CDLF12.....	22-23
CDL,CDLF16.....	24-25
CDL,CDLF20.....	26-27
CDL,CDLF32.....	28-29
CDL,CDLF42.....	30-31
CDL,CDLF65.....	32-33
CDL,CDLF85.....	34-35
CDL,CDLF120.....	36-37
CDL,CDLF150.....	38-39

Performance scope



Product range

Description	CDL1	CDL2	CDL3	CDL4	CDL5	CDL8	CDL12	CDL16	CDL20	CDL32	CDL42	CDL65	CDL85	CDL120	CDL150
Rated flow [m³/h]	1	2	3	4	5	8	12	16	20	32	42	65	85	120	150
Rated flow [l/s]	0.28	0.56	0.83	1.1	1.39	2.2	3.3	4.4	5.6	8.9	11.7	18	24	33	41.6
Flow range [m³/h]	0.4-2	1-3.5	1.2-4	1.5-7	2.5-8.5	5-12	7-16	8-22	10-28	16-40	25-55	30-80	50-110	60-150	80-180
Flow range [l/s]	0.11-0.56	0.28-0.97	0.33-1.1	0.42-1.9	0.69-2.36	1.4-3.3	1.9-4.4	2.2-6.1	2.8-7.8	4.4-11.1	6.9-15.3	8.3-22.2	13.8-30.5	16.7-41.7	22-50
Max. pressure [bar]	21	23	22	21	24	21	22	22	23	26	30	22	17	16	16
Motor power [kw]	0.37-2.2	0.37-3	0.37-3	0.37-4	0.37-5.5	0.75-7.5	1.5-11	2.2-15	1.1-18.5	1.5-30	3-45	4-45	5.5-45	11-75	11-75
Temperature range [°C]	Normal Temperature, High Temperature														
Max. efficiency [%]	44	46	54	59	66	64	63	66	69	76	78	80	81	74	73
Type															
CDL	●	●	●	●	●	●	●	●	●	●	●	●	●	●	●
CDLF	●	●	●	●	●	●	●	●	●	●	●	●	●	●	●
CDL pipe connection															
DIN Flange	DN25	DN25	DN25	DN32	DN32	DN40	DN50	DN50	DN50	DN65	DN80	DN100	DN100	DN125	DN125
Oval Flange	G1	G1	G1	G1 1/4	G1 1/4	G1 1/2									
CDLF pipe connection															
DIN Flange	DN25	DN25	DN25	DN32	DN32	DN40	DN50	DN50	DN50	DN65	DN80	DN100	DN100	DN125	DN125
Cutting ferrule joint	●	●	●	●	●	●	●	●	●						
Pipe thread	●	●	●	●	●	●	●	●	●						



CERTIFICATION

Certificate No: 111524Q0025R0S

HEREBY CERTIFY

Zhejiang Zhili Water Supply Equipment Co., LTD

Unified social credit code: 91330324MA2CRF7F7M

Registered address : Baoyi Village, Dongou Industrial Park, Ou North Street, Yongjia County,Wenzhou City, Zhejiang Province

Business address: No.797, Zhangbao East Road, Baoyi Village, Dongou Industrial Park,Yongjia County, Wenzhou City, Zhejiang Province

**Quality Management System
meets the standards**

GB/T 19001-2016 / ISO 9001:2015

Certification scope: Production and sales of water pumps, and sales of water supply equipment

Issuing date: 2024-05-26
Valid until: 2027-05-25

The certificate is valid for all administrative licenses and qualification licenses stipulated by the state within the validity period. This certificate will remain valid only after passing the regular (once in 12 months) surveillance audit. This certificate can be inquired on the official website of Certification and Accreditation Administration of China at <http://www.cnca.gov.cn>.

Address of certification body:Room 1101, Building 2, Ouhai Niu Shan Plaza, No.1, No.3 and No.5 Donganhua Road, Xinqiao Street, ouhai district, Wenzhou City, Zhejiang Province

Certification body approval number: CNCA-R-2022-1115 Tel:400-094-9001



ZXRZ



签发人:



CERTIFICATION

Certificate No: 111524S0015R0S

HEREBY CERTIFY

Zhejiang Zhili Water Supply Equipment Co., LTD

Unified social credit code: 91330324MA2CRF7F7M

Registered address : Baoyi Village, Dongou Industrial Park, Ou North Street, Yongjia County,Wenzhou City, Zhejiang Province

Business address: No.797, Zhangbao East Road, Baoyi Village, Dongou Industrial Park,Yongjia County, Wenzhou City, Zhejiang Province

**Occupational Health and Safety Management System
meets the standards**

GB/T 45001-2020 / ISO 45001:2018

Certification scope : Occupational health and safety management activities involved in the production and sales of water pumps and the sales of water supply equipment

Issuing date: 2024-05-26
Valid until: 2027-05-25

The certificate is valid for all administrative licenses and qualification licenses stipulated by the state within the validity period. This certificate will remain valid only after passing the regular (once in 12 months) surveillance audit. This certificate can be inquired on the official website of Certification and Accreditation Administration of China at <http://www.cnca.gov.cn>.

Address of certification body:Room 1101, Building 2, Ouhai Niu Shan Plaza, No.1, No.3 and No.5 Donganhua Road, Xinqiao Street, ouhai district, Wenzhou City, Zhejiang Province

Certification body approval number: CNCA-R-2022-1115 Tel:400-094-9001

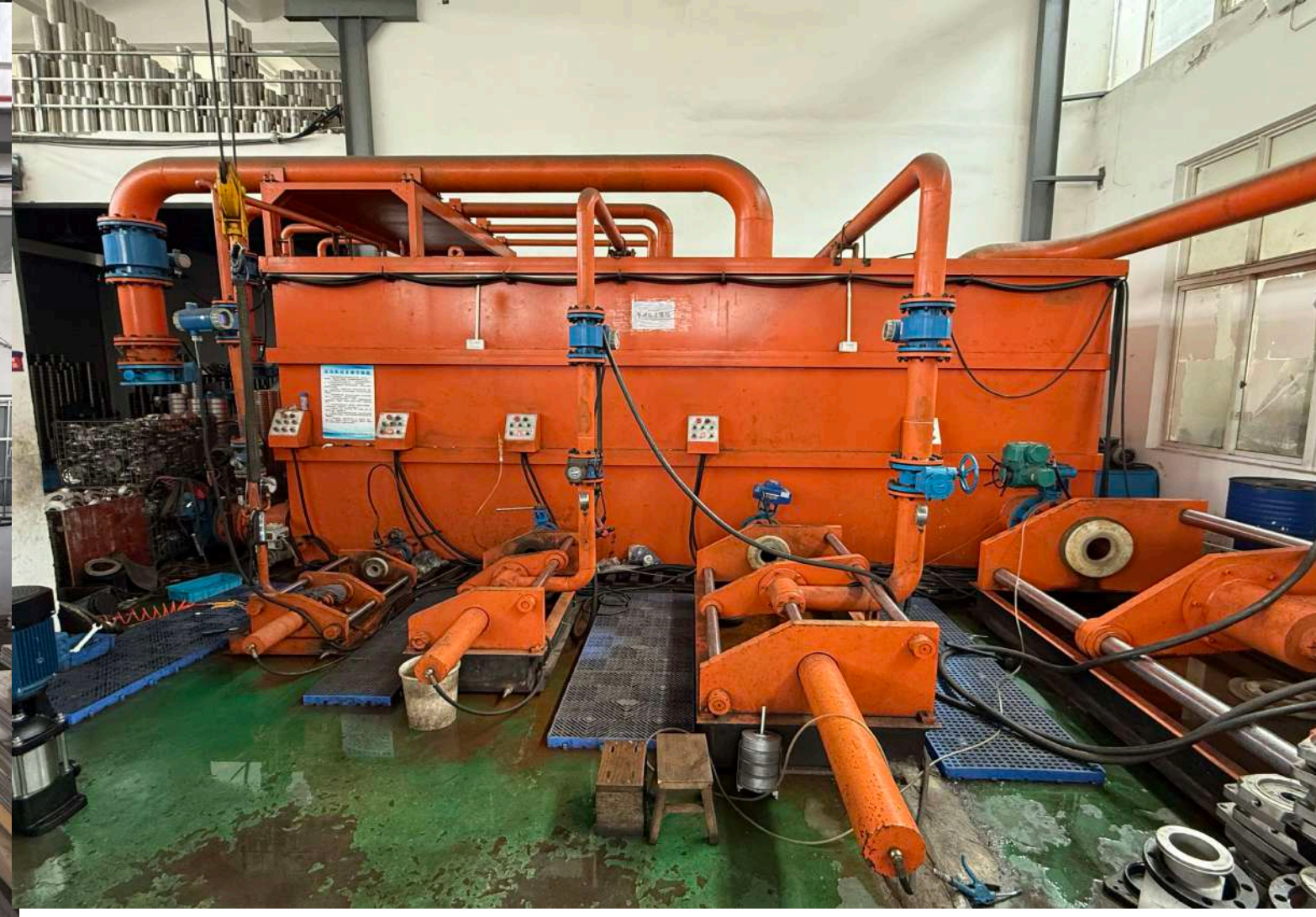


ZXRZ



签发人:







General data

Application

CDL/CDLF pump are multi-functional products. It can be used to convey various medium from tap water to industrial liquid at different temperature and with different flow rate and pressure. CDL type is applicable to conveying non-corrosive liquid, while CDLF is suitable for slightly corrosive liquid.

- Water supply: water filter and transport in waterworks, boosting of main pipeline, boosting in high rise building.
- Industrial boosting: process flow water system, cleaning system, high pressure washing system, fire fighting system.
- Industrial liquid conveying: Cooling and air-conditioning system, boiler water supply and condensing system, machine-associated purpose, acids and alkali.
- Water treatment: ultrafiltration system, RO system, distillation system, separator, swimming pool.
- Irrigation: Farmland irrigation, dripping irrigation.

Pump

CDL/CDLF pump are vertical non-self priming multistage centrifugal pump, which is driven by a standard electric motor. The motor output shaft directly connects with the pump shaft through a coupling. The pressure resistant cylinder and flow passage components are fixed between pump head and in-and outlet section with tie-bar bolts. The inlet and outlet are located at the pump bottom at the same plane. This kind of pump can be equipped with an intelligent protector to effectively prevent it from dry-running, out-of-phase and overload.

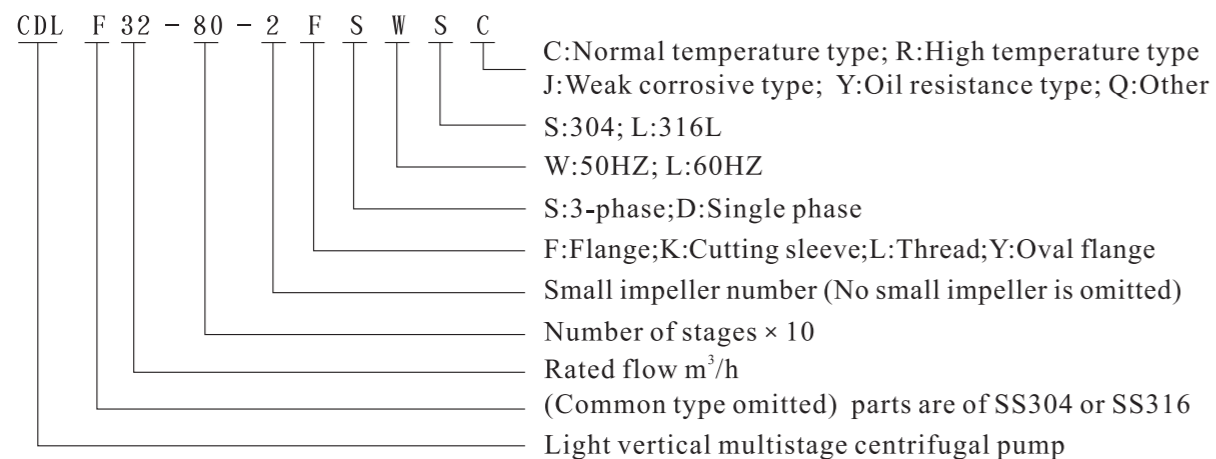
Operation conditions

- Thin, clean, non-flammable and non-explosive liquid containing no solid granules and fibers.
- Liquid temperature:
Normal temperature, High temperature
- Ambient temperature: up to +40°C
- Altitude: up to 1000m

Pump motor

- Total enclosed fan-cooled two-pole standard motor
- Protection class: IP55
- Insulation class: F
- Standard voltage: 50Hz: 1×220-230/240V 3×200-200/346-380V 3×220-240/380-415V 3×380-415V

Pump model



Pressure

Max inlet pressure

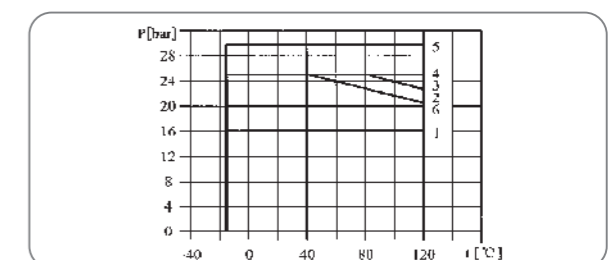
The max. inlet pressure is shown in the table below. But the actual inlet pressure plus the valve close pressure of the pump shall be lower than the max. allowable working pressure.

CDL, CDLF1	Max inlet pressure [Bar]
1-2 ~ 1-8	6
1-9 ~ 1-36	10
CDL, CDLF2	
2-2	6
2-3 ~ 2-11	10
2-13 ~ 2-26	15
CDL, CDLF3	
3-2 ~ 3-5	6
3-6 ~ 3-29	10
3-31 ~ 3-36	15
CDL, CDLF4	
4-2	6
4-3 ~ 2-10	10
4-12 ~ 4-22	15
CDL, CDLF5	
5-2 ~ 5-16	10
5-18 ~ 5-36	15
CDL, CDLF8	
8-2 ~ 8-6	6
8-8 ~ 8-20	10
CDL, CDLF12	
12-2 ~ 12-4	6
12-5 ~ 12-18	10
CDL, CDLF16	
16-2 ~ 16-3	6
16-4 ~ 16-16	10
CDL, CDLF20	
20-1 ~ 20-3	6
20-4 ~ 20-17	10
CDL, CDLF32	
32-10-1 ~ 32-20-2	3
32-20 ~ 32-40	4
32-50-2 ~ 32-100	10
32-110-2 ~ 32-140	15
CDL, CDLF42	
42-10-1	3
42-10 ~ 42-20	4
42-30-2 ~ 42-50	10
42-60-2 ~ 42-130-2	15
CDL, CDLF65	
65-10-1 ~ 65-20-2	4
65-20-1 ~ 65-30	10
65-40-2 ~ 65-80-1	15
CDL, CDLF85	
85-10-1 ~ 85-10	4
85-20-2 ~ 85-30-2	10
85-30-1 ~ 85-60	15
CDL, CDLF120, 150	15

Max working pressure

CDL, CDLF1	Curve number
1-2 ~ 1-23	1
1-25 ~ 1-36	2
CDL, CDLF2	
2-2 ~ 2-15	1
2-18 ~ 2-26	2
CDL, CDLF3	
3-2 ~ 3-23	1
3-25 ~ 3-36	2
CDL, CDLF4	
4-2 ~ 4-16	1
4-19 ~ 4-22	2
CDL, CDLF5	
5-2 ~ 5-23	1
5-25 ~ 5-36	2
CDL, CDLF8	
8-2 ~ 8-12	1
8-14 ~ 8-20	3
CDL, CDLF12	
12-2 ~ 12-10	1
12-12 ~ 12-18	3
CDL, CDLF16	
16-2 ~ 16-8	1
16-10 ~ 16-16	3
CDL, CDLF20	
20-1 ~ 20-8	1
20-10 ~ 20-17	3
CDL, CDLF32	
32-10-1 ~ 32-70	1
32-80-2 ~ 32-120	4
32-130 ~ 32-140	5
CDL, CDLF42	
42-10-1 ~ 42-60	1
42-70-2 ~ 42-90	4
42-100-2 ~ 42-130-2	5
CDL, CDLF65	
65-10-1 ~ 65-50	1
65-60-2 ~ 65-80-1	4
CDL, CDLF85	
85-10-1 ~ 85-50-2	1
85-50 ~ 85-60	4
CDL, CDLF120, 150	6

The following figure shows the limitation of pressure and temperature which shall be kept within the region as show in the figure



NPSH

Minimum inlet pressure NPSH

In case that the pressure in pump is lower than the steam pressure used to convey liquid, the cavitations will occur. To avoid cavitations, a minimum pressure at the inlet side of the pump shall be guaranteed. The max. Suction lift H in metres head can be calculated as following formula:

$$H = P_b \times 10.2 - NPSH - H_f - H_v - H_s$$

P_b = Barometric pressure in bar.

(Barometric pressure can be set to 1 bar.)

In closed system, P_b indicates the system pressure in bar

H_f = Friction loss in suction pipe in metres head at the highest flow the pump will be delivering.

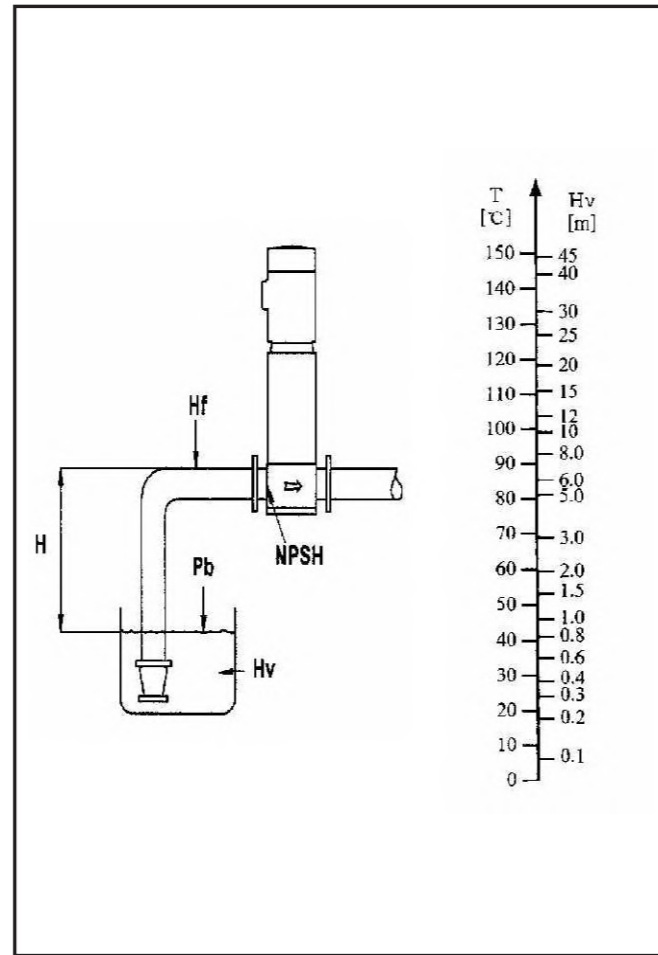
H_v = Vapour pressure in metres head, see fig

H_s = Safety margin = Minimum 0.5 metres head

If the calculated result H is positive, the pump can operate at a suction lift of max. H metres head.

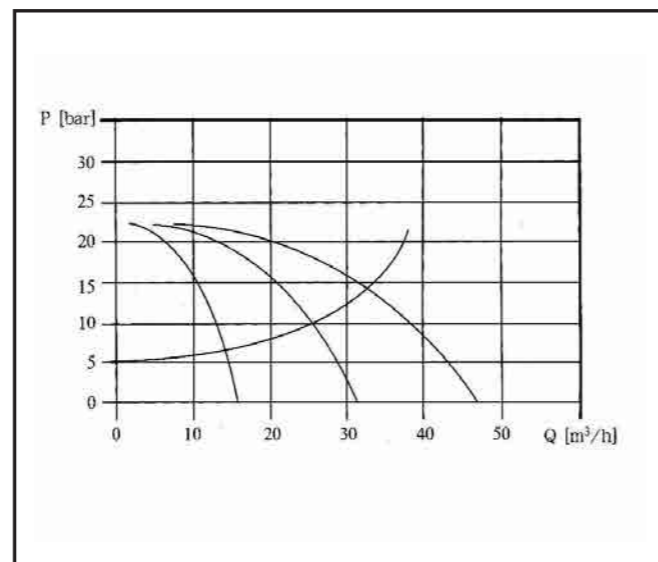
If the calculated result H is negative, an inlet pressure of minimum H metres head is required. There must be a pressure equal to the calculated H during operation.

Check and ensure that the pump is not in cavitations state



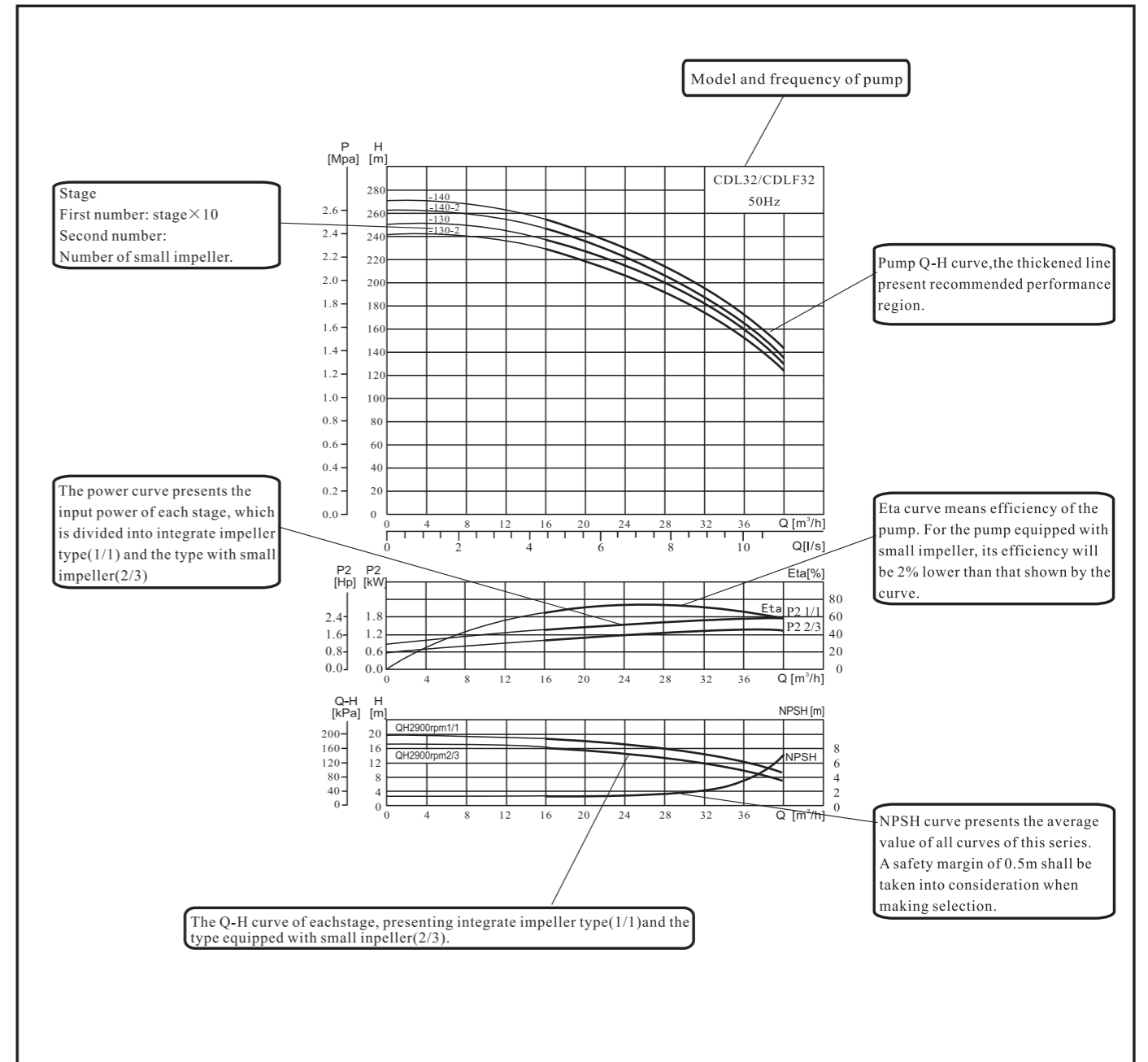
Operation in parallel

- Connection several pumps in parallel running will be much more benefit than running a single pump.
- Increasing the possibility of water supply when one pump is in failure, only part of the system flow is effected.
- Two pumps or more can be connected in parallel running if necessary.



Curve description

Curve description



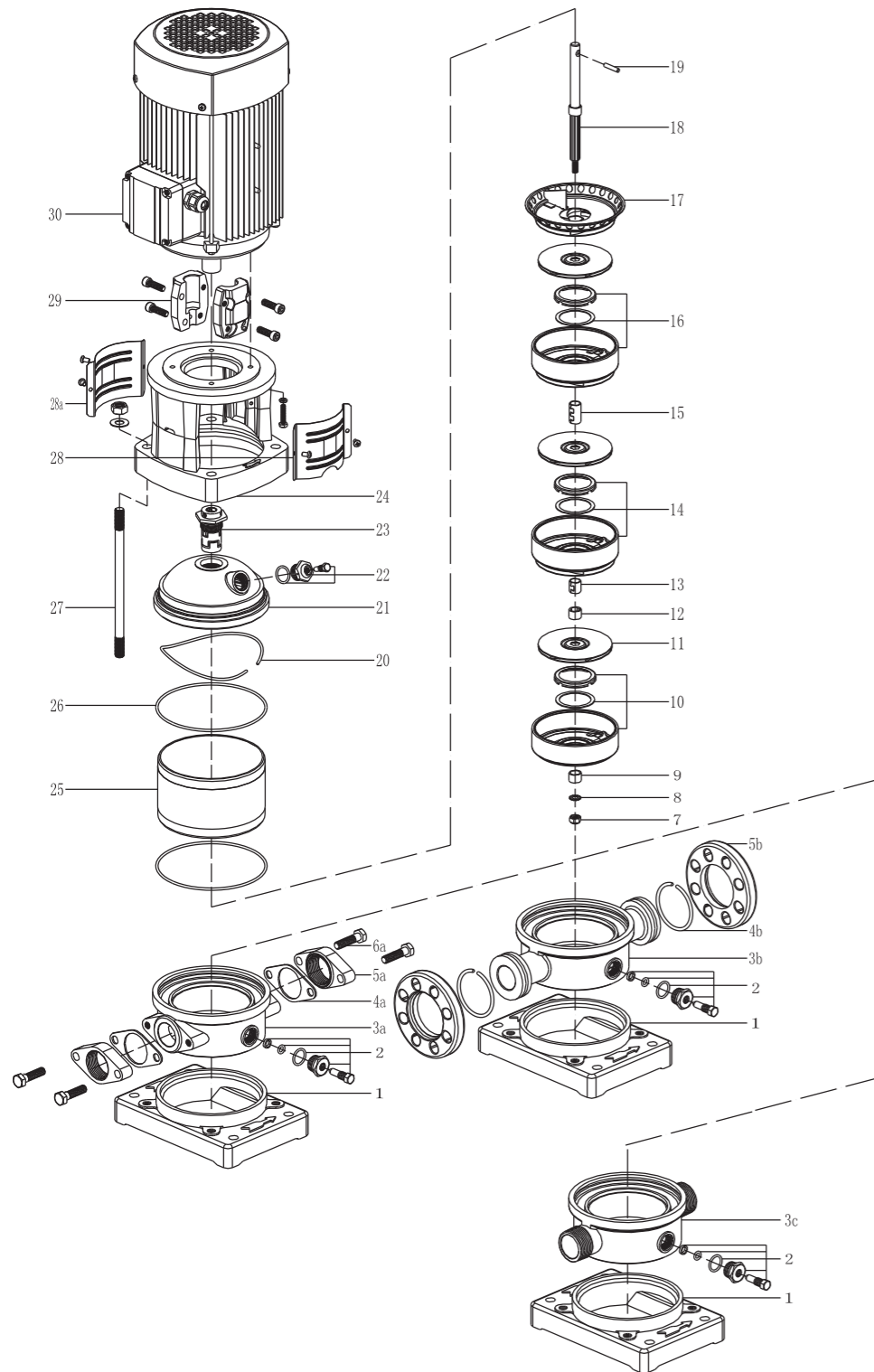
Performance curve

Following conditions are suitable for the performance curves shown below:

- All the performance curves are based on the measured values of a motor 3 × 380V at a constant speed of 2900rpm.
- Curve tolerance in conformity with ISO9906.
- Measure is done with 20°C air-free water, kinematic viscosity of 1mm²/sec.
- The operation of pump shall refer to the performance region indicated by the thickened curve to prevent overheating due to too small flow rate or overload of motor due to too large flow rate.

Exploded view

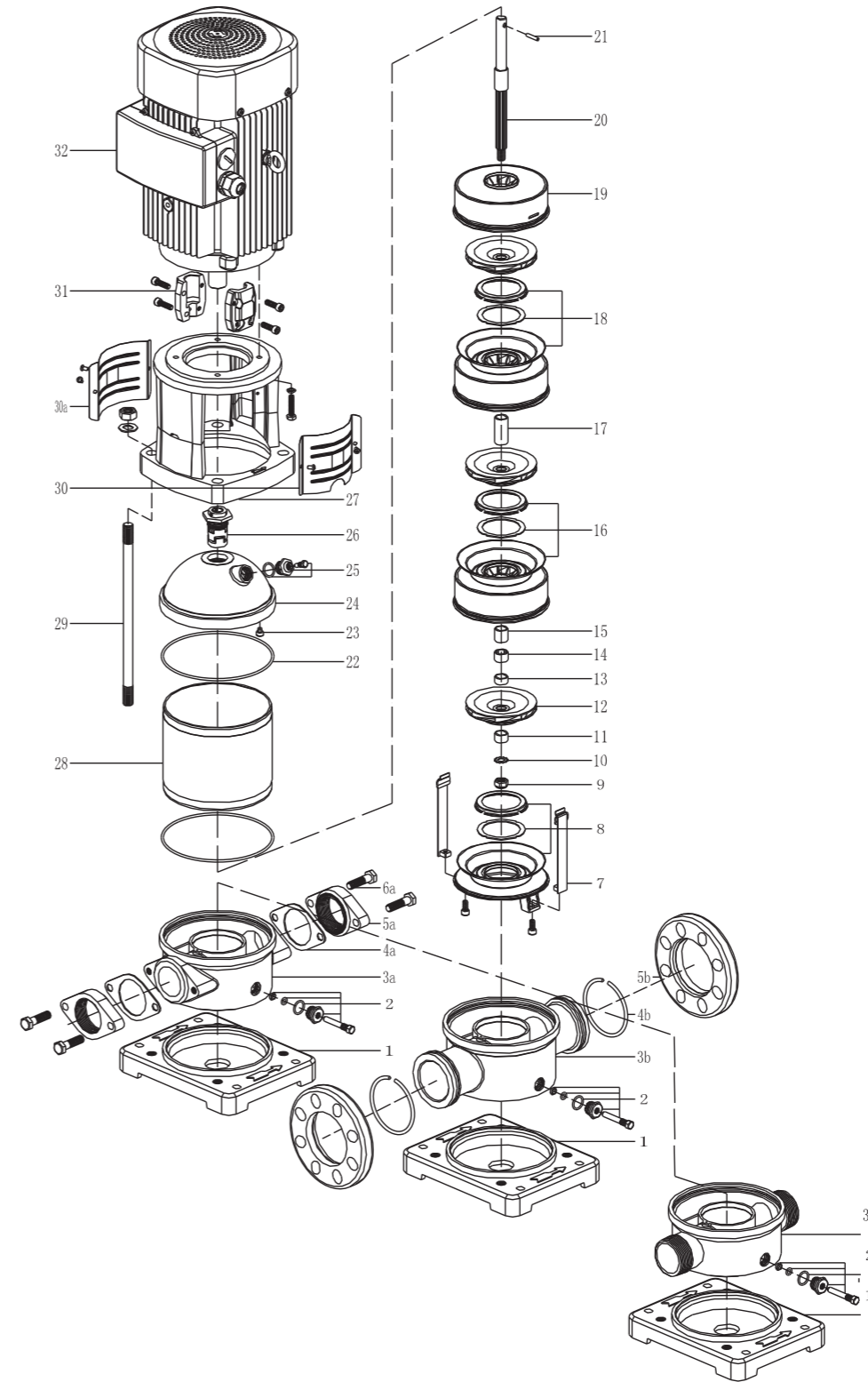
CDLF1,2,3,4,5



- Base frame
- By-pass Valve
- 1 Oval type inlet/outlet section
- 2 Flange type inlet/outlet section
- 3a Thread type inlet/outlet section
- 3b Gasket
- 3c Snap ring
- 4a Oval flange
- 4b Flange
- 5a Bolt
- 5b Lock nut
- 6a Gasket
- 7 Gland
- 8 Inducer
- 9 Impeller
- 10 Bearing
- 11 Bearing spacing pipe
- 12 Bearing diffuser
- 13 Impeller spacing pipe
- 14 Diffuser
- 15 Top diffuser
- 16 Shaft
- 17 Pin
- 18 Waveshape spring
- 19 Pump head
- 20 Air vent valve
- 21 Mechanical seal
- 22 Bracket
- 23 Out cylinder
- 24 O-ring
- 25 Stay bolt
- 26 Coupling guard
- 27 Coupling guard (No gap)
- 28 Coupling
- 28a Motor
- 29
- 30

Exploded view

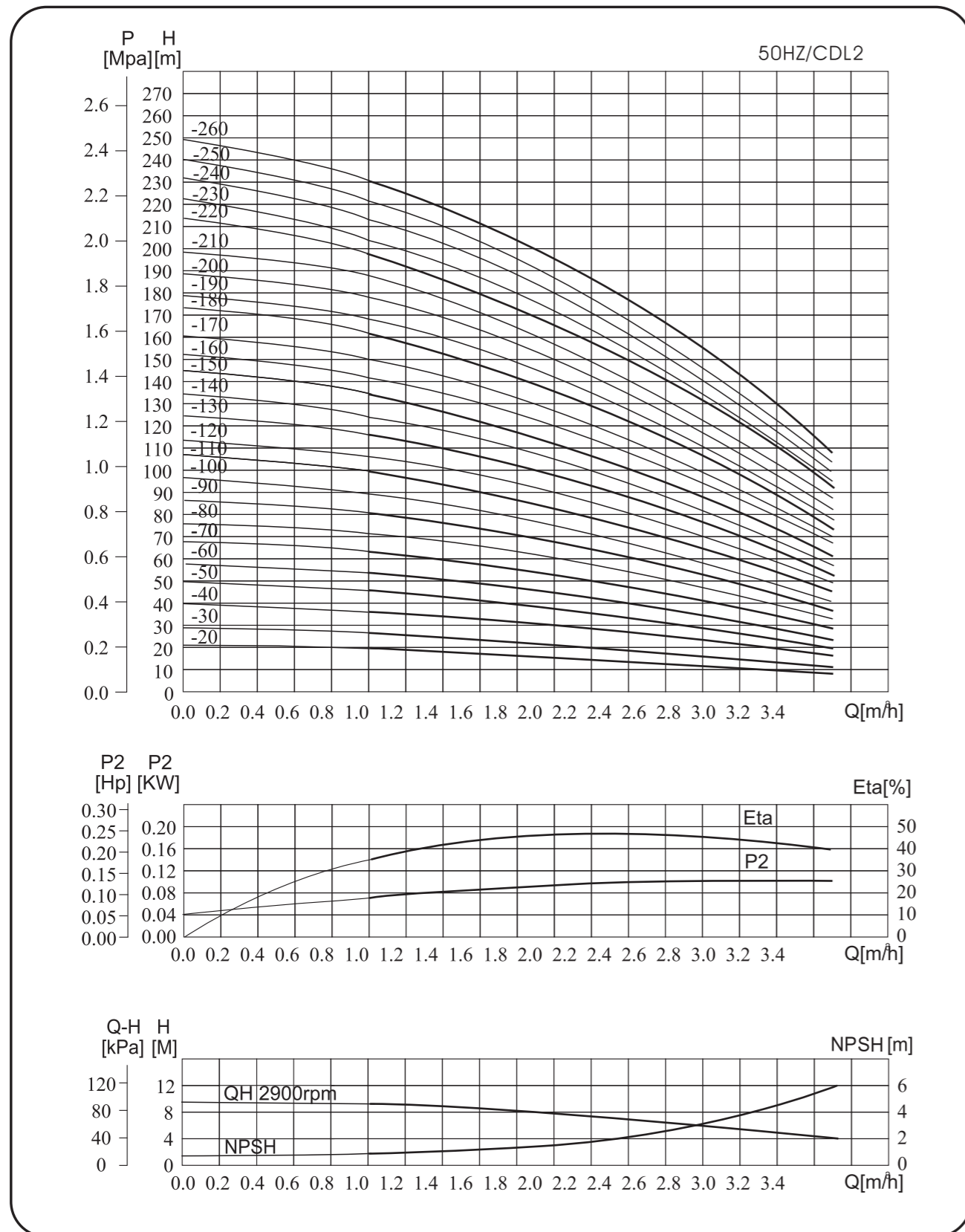
CDLF8,12,16,20



- 1 Base frame
- 2 By-pass Valve
- 3a Oval type inlet/outlet section
- 3b Flange type inlet/outlet section
- 3c Thread type inlet/outlet section
- 4a Gasket
- 4b Snap ring
- 5a Oval flange
- 5b Flange
- 6a Bolt
- 7 Taut band
- 8 Inducer
- 9 Lock nut
- 10 Gasket
- 11 Gland
- 12 Impeller
- 13 Short bearing spacing pipe
- 14 Bearing
- 15 Long bearing spacing pipe
- 16 Bearing diffuser
- 17 Impeller spacing pipe
- 18 Diffuser
- 19 Top diffuser
- 20 Shaft
- 21 Pin
- 22 O-ring
- 23 Gasket
- 24 Pump head
- 25 Air vent valve
- 26 Mechanical seal
- 27 Bracket
- 28 Out cylinder
- 29 Stay bolt
- 30 Coupling guard
- 30a Coupling guard (No gap)
- 31 Coupling
- 32 Motor

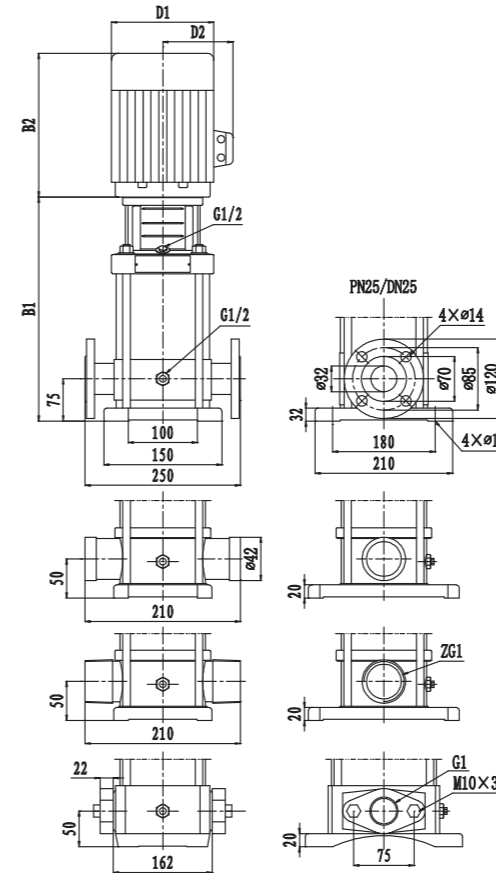
CDLF2

Performance curve



CDLF2

Installation sketch



size and weight

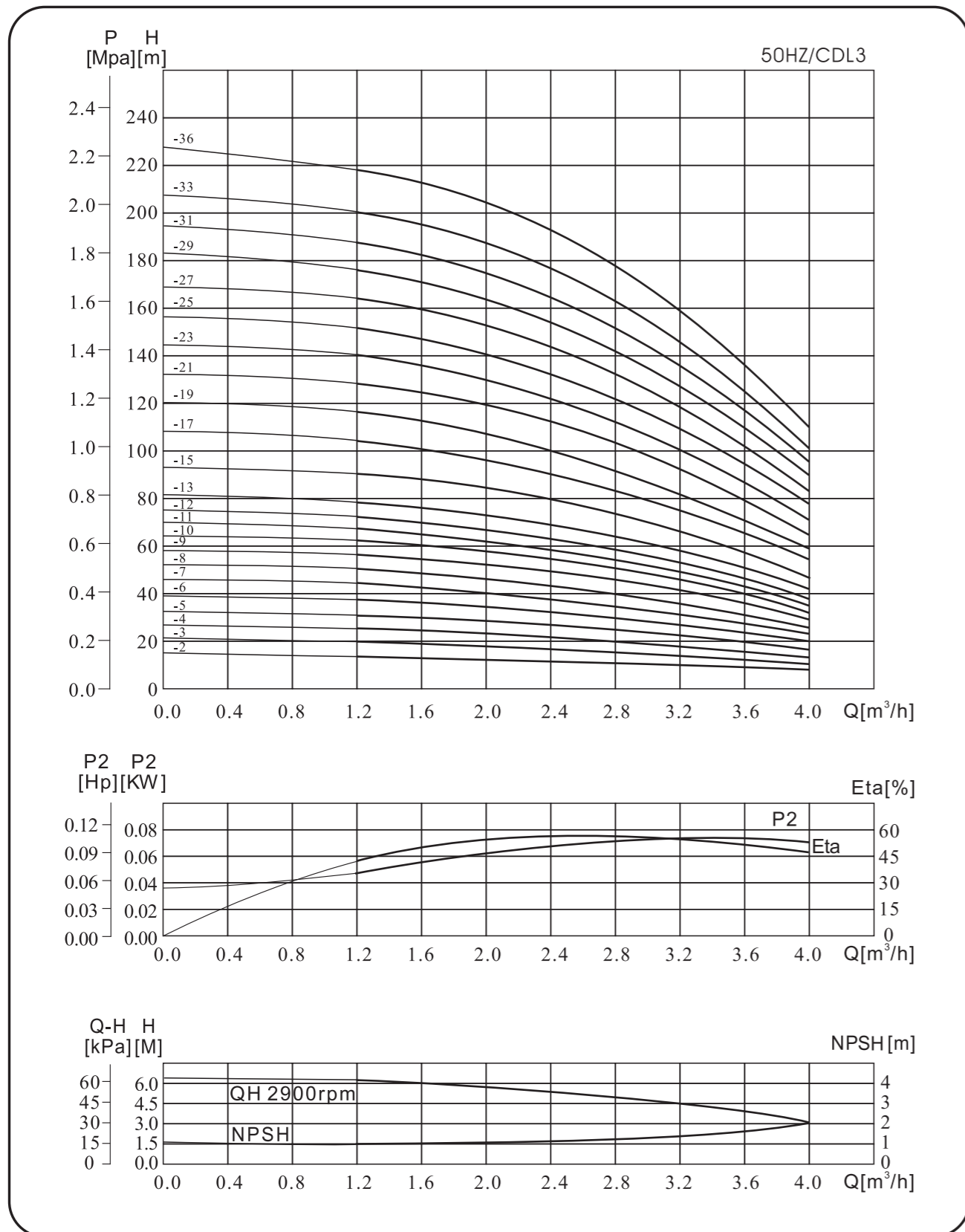
Model	Size(mm)					Weight (kg)
	CDL/CDLF	B1	B2	B1+B2	D1	
2-20	251	235	486	145	110	20
2-30	269	235	504	145	110	20
2-40	287	235	522	145	110	20
2-50	305	235	540	145	110	20
2-60	323	235	558	145	110	25
2-70	341	235	576	145	110	25
2-90	377	235	612	170	150	30
2-110	413	235	648	170	150	30
2-130	465	280	739	170	150	35
2-150	500	280	775	170	150	35
2-180	550	280	829	180	155	40
2-220	621	280	901	180	155	45
2-260	703	340	1043	180	155	50

Performance table

Model	Motor(kw)	Q (m³/h)	H (m)									
			1	1.2	1.6	2.0	2.4	2.8	3.2	3.5		
2-20	0.37	18	17	16	15	13	12	10	8			
2-30	0.37	27	26	24	22	20	18	15	12			
2-40	0.55	36	35	32	30	27	24	20	16			
2-50	0.55	45	43	40	37	34	30	25	20			
2-60	0.75	53	52	48	45	40	36	30	24			
2-70	0.75	62	61	57	52	47	42	35	28			
2-80	1.1	71	69	65	60	54	48	40	33			
2-90	1.1	80	78	73	67	61	54	45	37			
2-100	1.1	89	87	81	75	68	60	50	41			
2-110	1.1	97	95	89	82	74	66	55	45			
2-120	1.5	106	104	97	90	81	72	60	49			
2-130	1.5	115	113	106	97	88	78	65	53			
2-140	1.5	124	122	114	105	95	84	70	57			
2-150	1.5	133	131	122	112	102	90	75	62			
2-160	1.5	141	140	130	120	108	96	80	66			
2-170	1.5	150	148	138	127	115	102	85	70			
2-180	2.2	159	157	146	135	122	108	90	74			
2-190	2.2	168	166	155	142	129	114	95	78			
2-200	2.2	177	174	163	150	136	120	100	82			
2-210	2.2	186	183	171	157	142	126	105	87			
2-220	2.2	195	192	179	165	149	132	110	91			
2-230	3.0	204	200	187	172	156	138	115	95			
2-240	3.0	213	209	195	180	163	144	120	99			
2-250	3.0	222	218	204	187	170	150	125	103			
2-260	3.0	231	226	212	195	177	156	130	107			

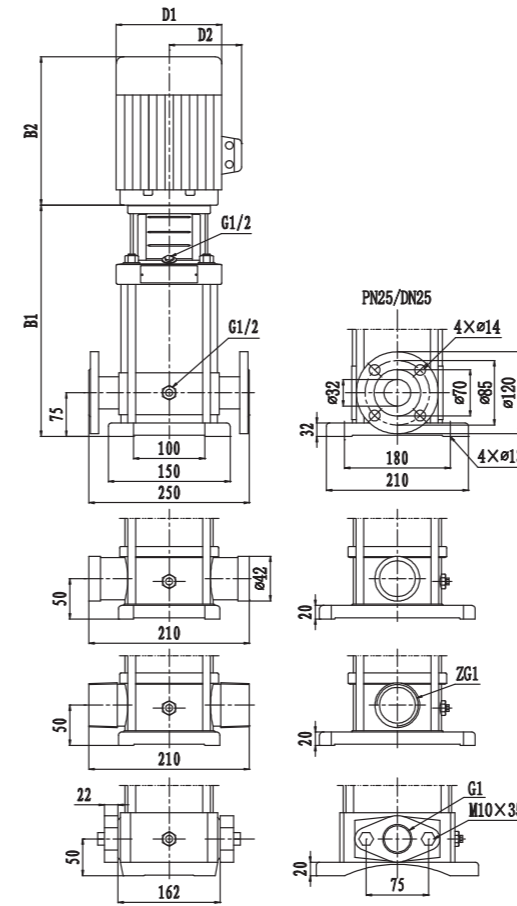
CDLF3

Performance curve



CDLF3

Installation sketch



size and weight

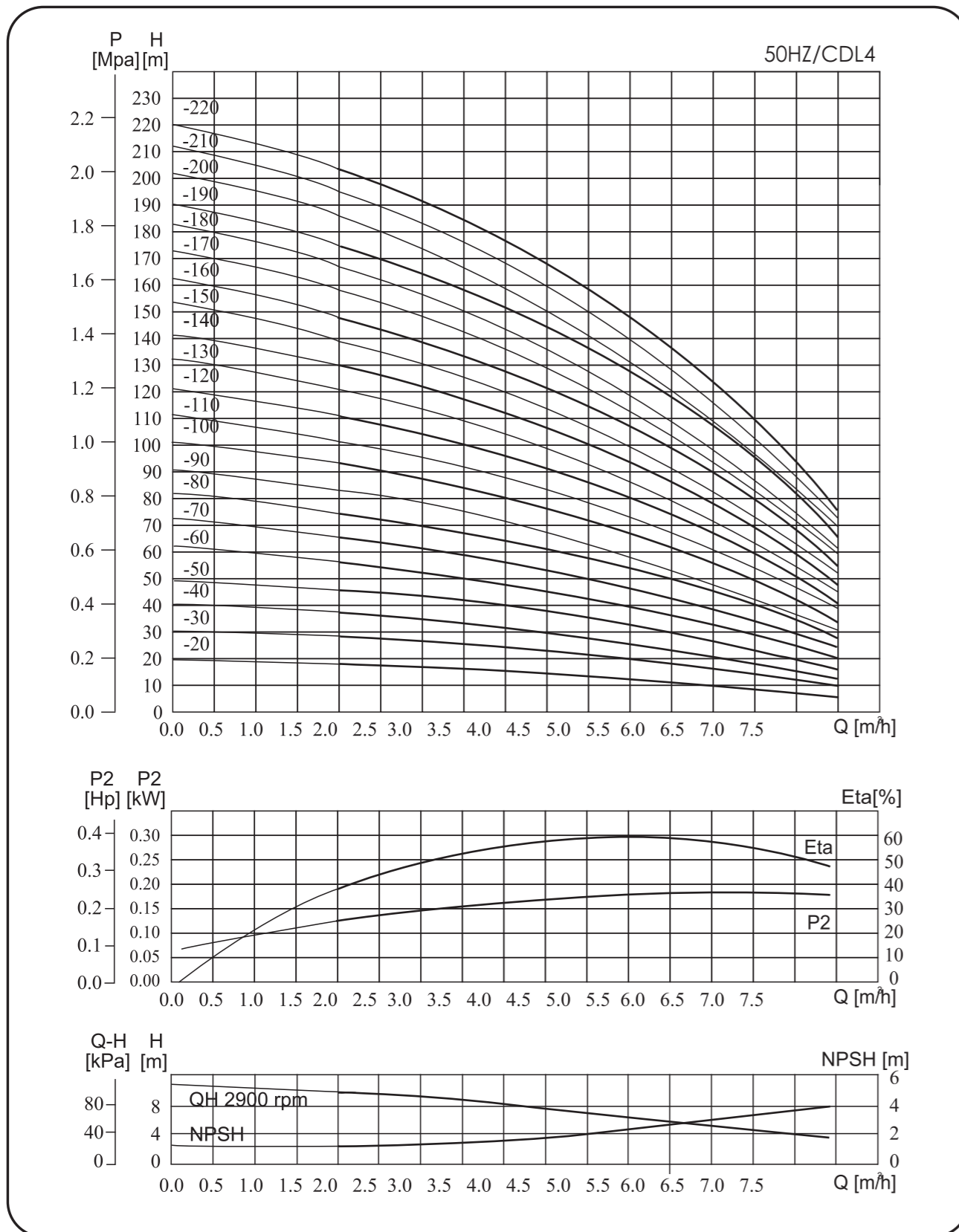
Model	Size(mm)					Weight (kg)
	CDL/CDLF	B1	B2	B1+B2	D1	
3-20	258	210	468	148	117	20
3-30	276	210	486	148	117	20
3-40	294	210	504	148	117	20
3-50	312	210	522	148	117	20
3-60	330	210	540	148	117	22
3-70	348	210	558	148	117	22
3-80	376	245	621	170	142	22
3-90	394	245	639	170	142	22
3-100	412	245	657	170	142	22
3-110	430	245	675	170	142	25
3-120	448	245	693	170	142	25
3-130	466	245	711	170	142	25
3-150	502	245	747	170	142	25
3-170	548	290	838	190	155	30
3-190	584	290	874	190	155	35
3-210	620	290	910	190	155	35
3-230	656	290	946	190	155	40
3-250	692	290	982	190	155	40
3-270	728	290	1018	190	155	40
3-290	764	290	1054	190	155	40
3-310	810	315	1125	197	165	45
3-330	846	315	1161	197	165	50
3-360	900	315	1215	197	165	50

Performance table

Model	Motor(kw)	Q (m³/h)	1.2	1.6	2	2.4	2.8	3	3.2	3.6	4.0
3-20	0.37	H (m)	12.5	11.5	11	10.5	10	9	8	7	6
3-30	0.37		19	18.5	17.5	16.5	15	14	13	11	9
3-40	0.37		25	24	23	21.5	20	19	18	15	12
3-50	0.37		31	30	29	27	25	23	22	19	16
3-60	0.55		36	35	34	32	30	28	27	23	19
3-70	0.55		43	41	39	37	34	32	31	27	22
3-80	0.75		49	47	45	43	39	37	35	31	25
3-90	0.75		55	53	51	48	45	42	40	35	28
3-100	0.75		61	59	57	54	50	47	45	39	31
3-110	1.1		67	64	61	58	54	51	49	42	34
3-120	1.1		73	70	67	63	58	55	52	45	37
3-130	1.1		78	76	73	69	64	60	57	49	40
3-150	1.1		90	88	84	79	73	69	66	57	46
3-170	1.5		103	100	96	90	83	79	75	64	52
3-190	1.5		115	112	107	100	92	88	83	72	58
3-210	2.2		128	124	119	112	102	98	91	79	64
3-230	2.2	140	135	130	122	112	107	100	86	70	
3-250	2.2	151	147	141	131	122	116	109	94	76	
3-270	2.2	164	159	152	143	132	124	117	101	82	
3-290	2.2	175	170	163	153	142	133	126	109	88	
3-310	3	187	182	175	165	153	142	135	116	94	
3-330	3	199	194	187	176	163	151	145	125	100	
3-360	3	218	212	204	192	178	168	159	137	109	

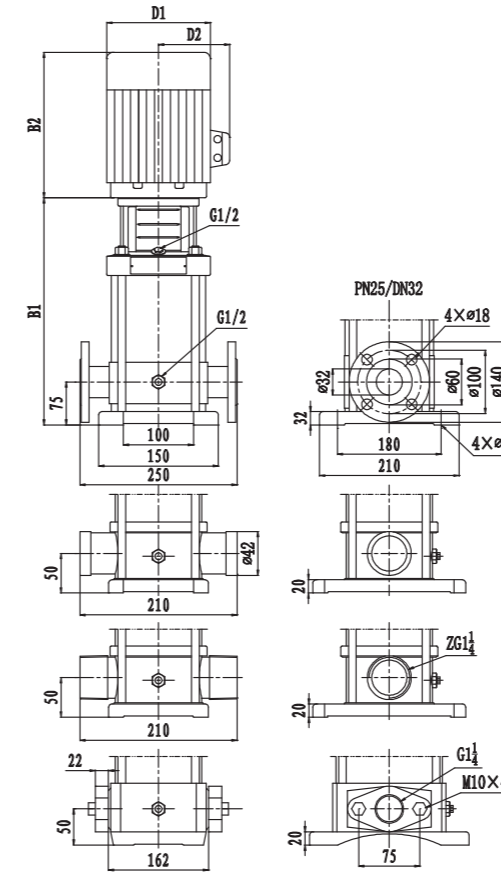
CDLF4

Performance curve



CDLF4

Installation sketch



size and weight

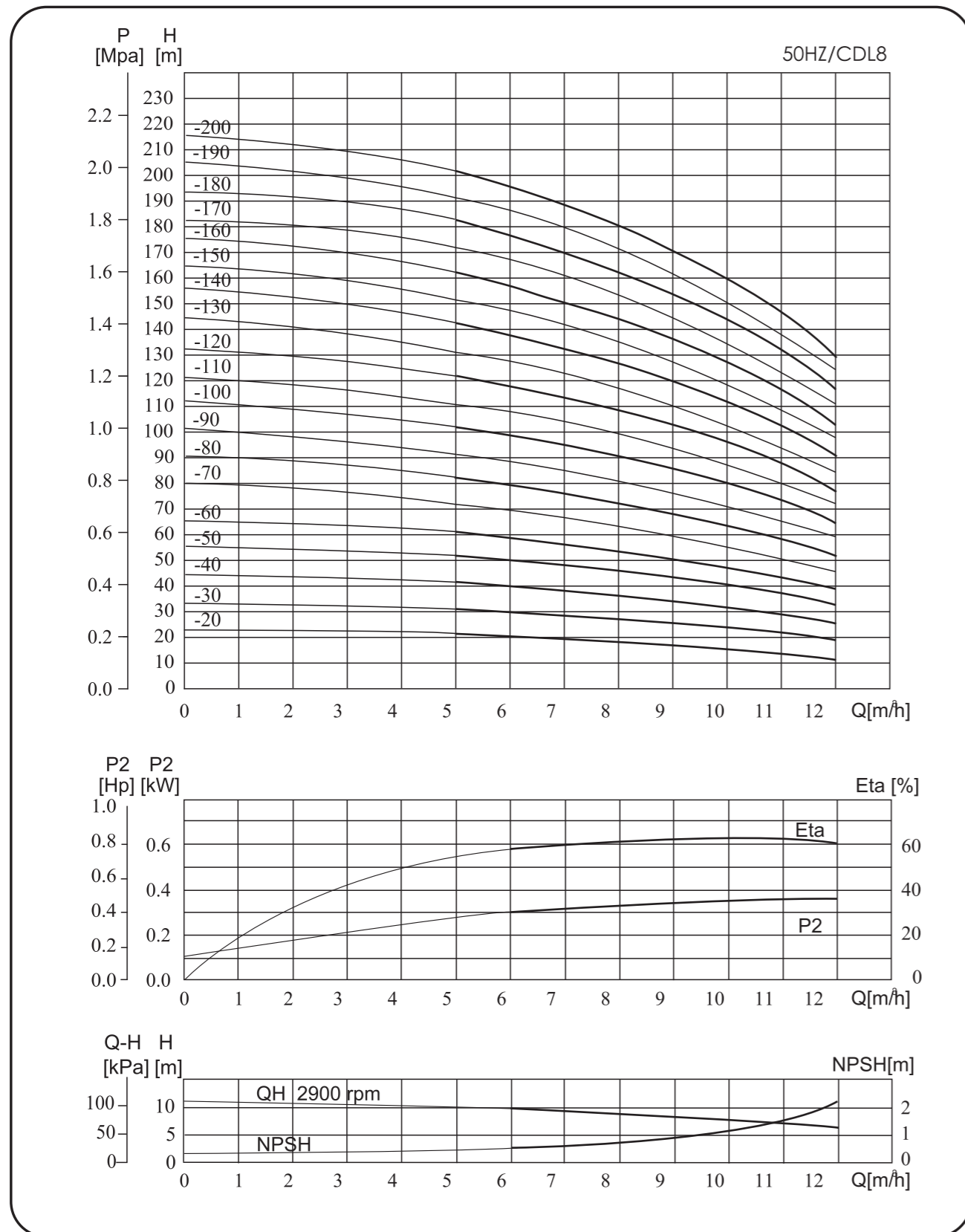
Model CDL/CDLF	Size(mm)					Weight (kg)
	B1	B2	B1+B2	D1	D2	
4-20	266	235	501	145	110	20
4-30	293	235	528	145	110	20
4-40	320	235	555	145	110	20
4-50	347	235	582	170	150	20
4-60	374	235	609	170	150	20
4-70	411	280	691	170	150	25
4-80	438	280	718	170	150	25
4-100	492	280	772	170	150	30
4-120	546	280	826	180	155	30
4-140	610	340	950	180	155	35
4-160	664	340	1004	180	155	35
4-190	745	375	1120	210	180	40
4-220	826	375	1201	210	180	45

Performance table

Model CDL/CDLF	Motor(kw)	Q (m³/h)	H (m)																	
			1.5	2.0	3.0	4.0	5.0	6.0	7.0	8.0										
4-20	0.37		19	18	17	16	13	10	8	6										
4-30	0.55		29	27	26	24	20	16	13	10										
4-40	0.75		38	37	35	32	27	23	18	13										
4-50	1.1		48	46	43	40	34	29	23	17										
4-60	1.1		57	55	52	48	42	35	28	20										
4-70	1.5		67	65	61	56	49	42	33	24										
4-80	1.5		76	74	69	64	56	48	38	27										
4-90	2.2		86	83	78	72	63	54	43	31										
4-100	2.2		95	93	87	80	70	61	48	34										
4-110	2.2		105	102	95	88	78	67	53	38										
4-120	2.2		114	111	104	96	85	73	58	41										
4-130	3.0		124	121	113	104	92	80	63	45										
4-140	3.0		133	130	121	112	99	86	68	48										
4-150	3.0		143	139	130	120	106	92	73	52										
4-160	3.0		152	149	139	128	114	99	78	55										
4-170	4.0		162	158	147	136	121	105	83	59										
4-180	4.0		171	167	156	144	128	111	88	62										
4-190	4.0		181	177	165	152	135	118	93	66										
4-200	4.0		190	186	173	160	142	124	98	69										
4-210	4.0		200	195	182	168	150	130	103	73										
4-220	4.0		209	204	191	176	157	136	108	76										

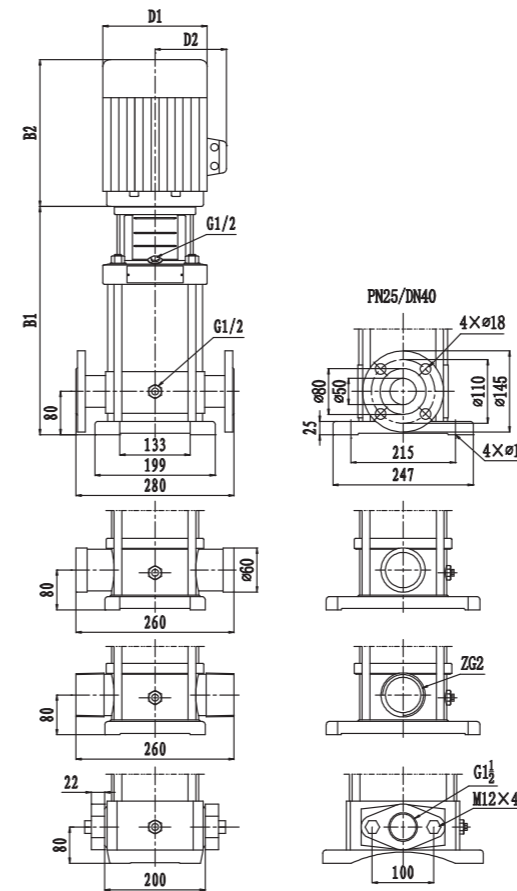
CDLF8

Performance curve



CDLF8

Installation sketch



size and weight

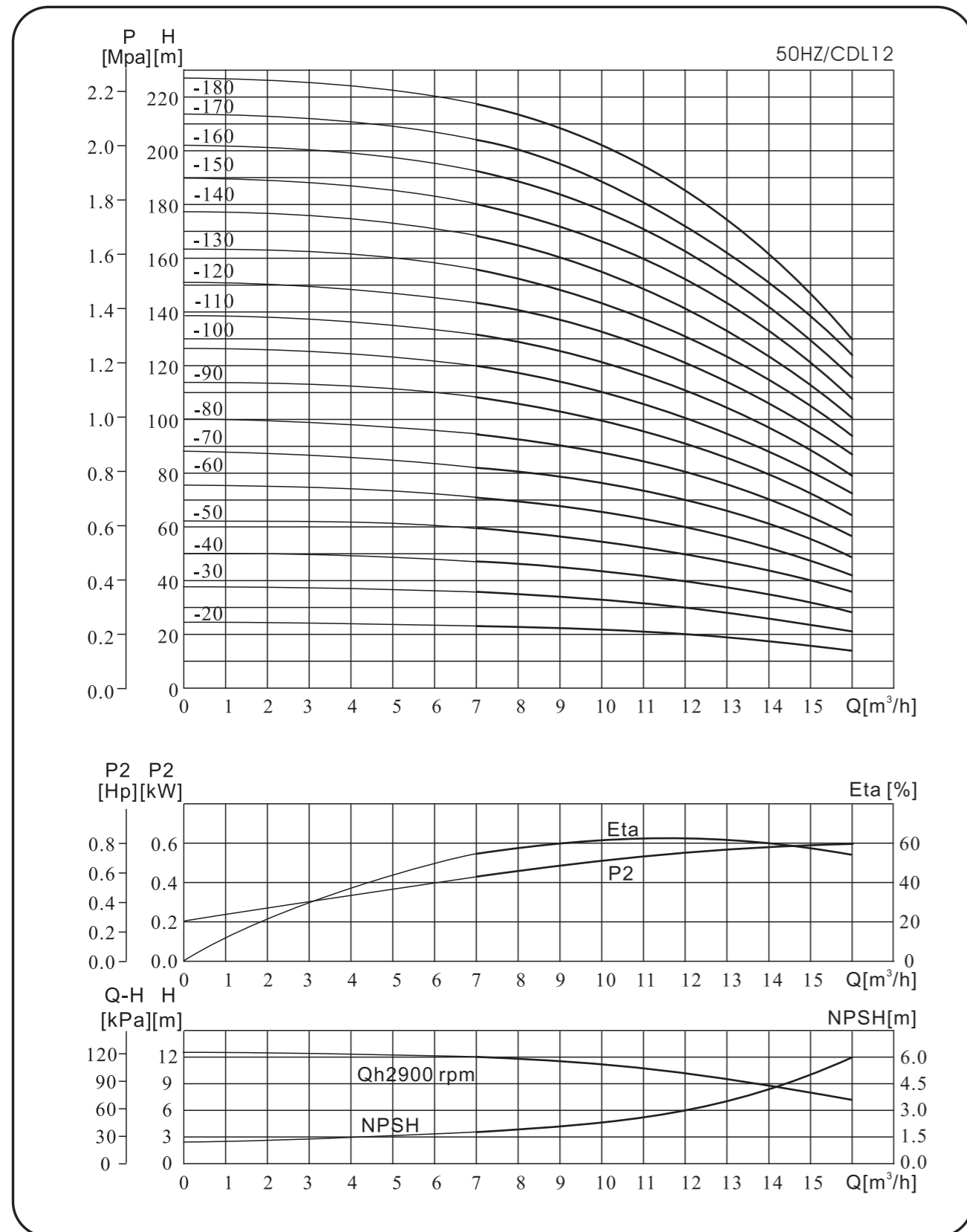
Model	Size(mm)					Weight (kg)
	B1	B2	B1+B2	D1	D2	
CDL/CDLF						
8-20	360	235	595	145	110	25
8-30	390	235	625	170	150	30
8-40	430	280	710	170	150	30
8-50	460	280	740	180	155	40
8-60	490	280	770	180	155	40
8-80	560	340	900	180	155	45
8-100	620	375	995	210	180	55
8-120	680	375	1055	210	180	55
8-140	760	395	1155	250	210	80
8-160	820	395	1215	250	210	80
8-180	880	395	1275	250	210	90
8-200	940	395	1335	250	210	95

Performance table

Model	Motor(kw)	Q (m³/h)	H (m)									
CDL/CDLF			5	6	7	8	9	10	11	12		
8-20	0.75		21	20	19	18	17	16	14	13		
8-30	1.0		31	30	28	27	25	24	21	19		
8-40	1.5		41	40	37	36	34	32	29	26		
8-50	2.2		51	49	47	45	42	40	36	33		
8-60	2.2		61	59	56	54	51	48	43	39		
8-70	3.0		71	69	65	63	59	56	51	46		
8-80	3.0		81	78	75	72	68	64	58	52		
8-90	4.0		91	88	84	81	76	72	65	59		
8-100	4.0		101	98	93	90	85	80	73	65		
8-110	4.0		111	107	103	99	93	88	80	72		
8-120	4.0		121	117	112	108	102	96	87	78		
8-130	5.5		131	127	121	117	110	104	95	85		
8-140	5.5		141	136	131	126	119	112	102	91		
8-150	5.5		151	146	140	135	127	120	109	98		
8-160	5.5		161	156	149	144	136	128	117	104		
8-170	7.5		171	165	159	153	144	136	124	111		
8-180	7.5		181	175	168	162	153	144	131	117		
8-190	7.5		191	185	177	171	161	152	139	124		
8-200	7.5		201	195	187	180	170	160	146	130		

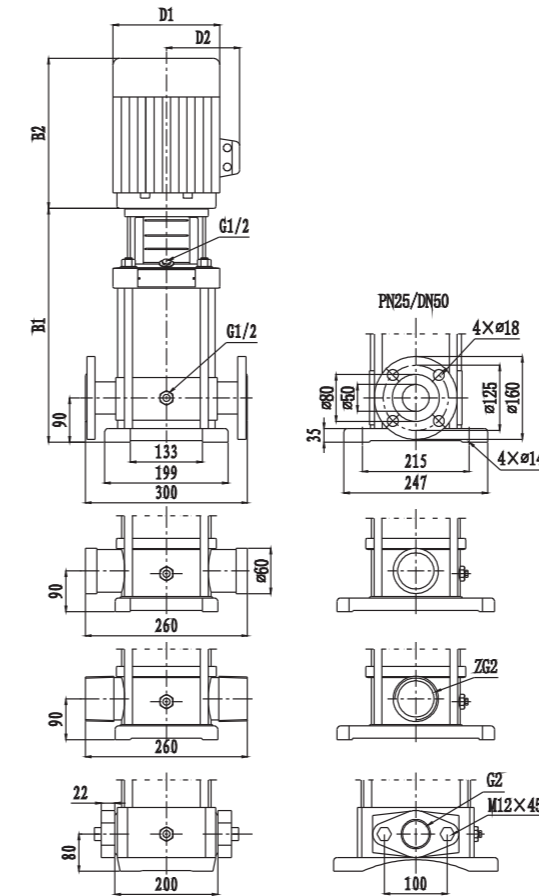
CDLF12

Performance curve



CDLF12

Installation sketch



size and weight

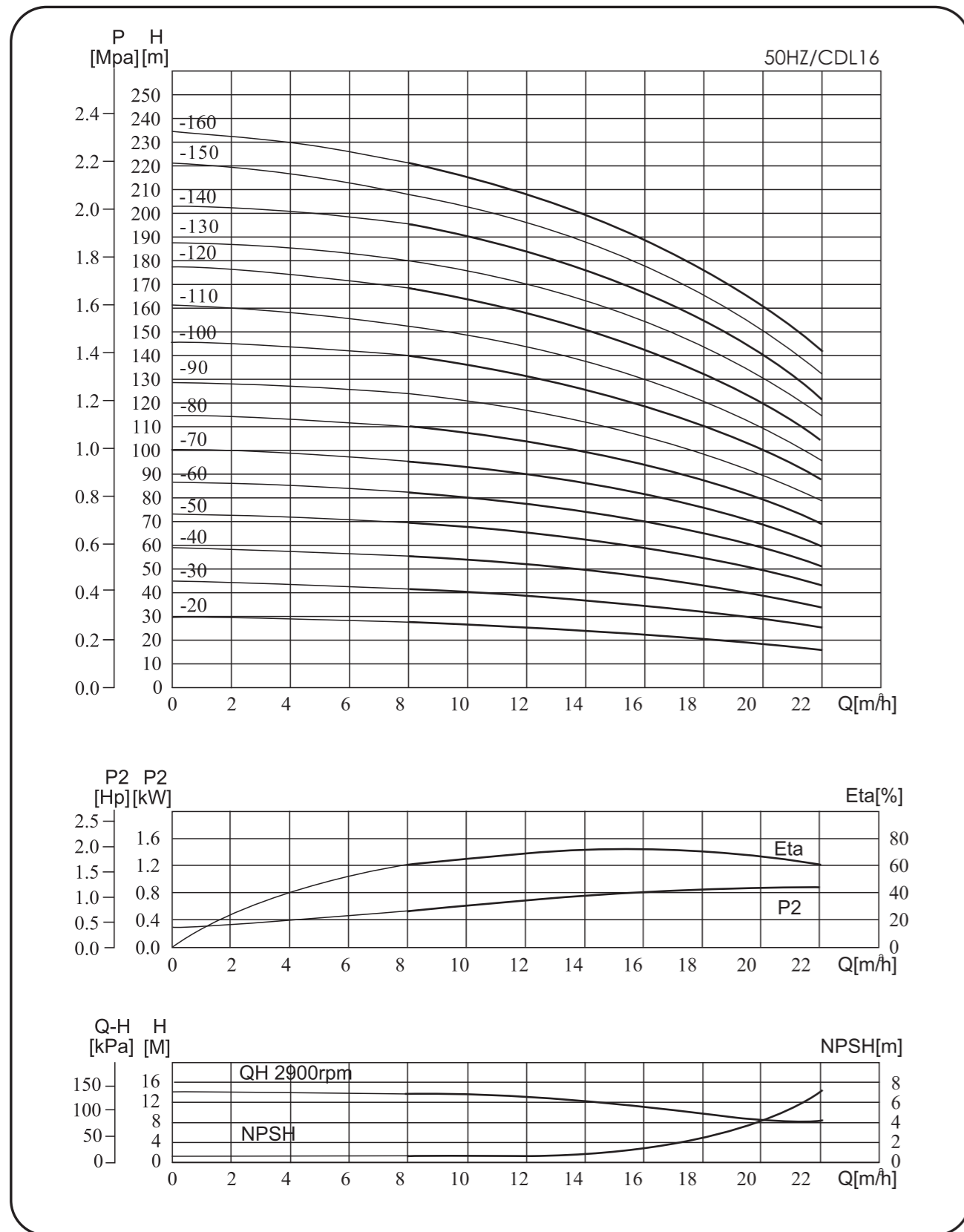
Model	Size(mm)					Weight (kg)
	CDL/CDLF	B1	B2	B1+B2	D1	
12-20	367	290	657	190	155	39
12-30	397	290	687	190	155	43
12-40	437	315	752	197	165	51
12-50	467	315	782	197	165	53
12-60	497	335	832	230	188	61
12-70	547	430	977	260	208	73
12-80	577	430	1007	260	208	74
12-90	607	430	1037	260	208	76
12-100	637	430	1067	260	208	83
12-120	697	430	1127	260	208	87
12-140	845	490	1335	330	255	157
12-160	905	490	1395	330	255	161
12-180	965	490	1455	330	255	164

Performance table

Model	Motor(kw)	Q (m³/h)	H (m)												
			7	8	9	10	11	12	13	14	15	16			
12-20	1.5	23.5	23	22.5	22	21	20	18.5	17	15.5	14				
12-30	2.2	35.5	35	34	33	31.5	30	28	26	23.5	21				
12-40	3	47	46	45	44	42	40	37	34	31	28				
12-50	3	59.5	58	56.5	55	52.5	50	46.5	43	39	35				
12-60	4	71.5	70	68	66	63	60	56	52	47	42				
12-70	5.5	83.5	82	79.5	77	73.5	70	65.5	61	55	49				
12-80	5.5	95.5	94	91	88	84	80	75	70	63	56				
12-90	5.5	108	106	103	100	95.5	91	85	79	71.5	64				
12-100	7.5	120	118	114.5	111	106	101	94.5	88	80	72				
12-120	7.5	143.5	141	137	133	127	121	113.5	106	96	86				
12-140	11	168	165	160	155	148	141	132.5	124	112	100				
12-160	11	192.5	189	183.5	178	170	162	152	142	128.5	115				
12-180	11	217	213	207.5	202	192.5	183	171.5	160	145	130				

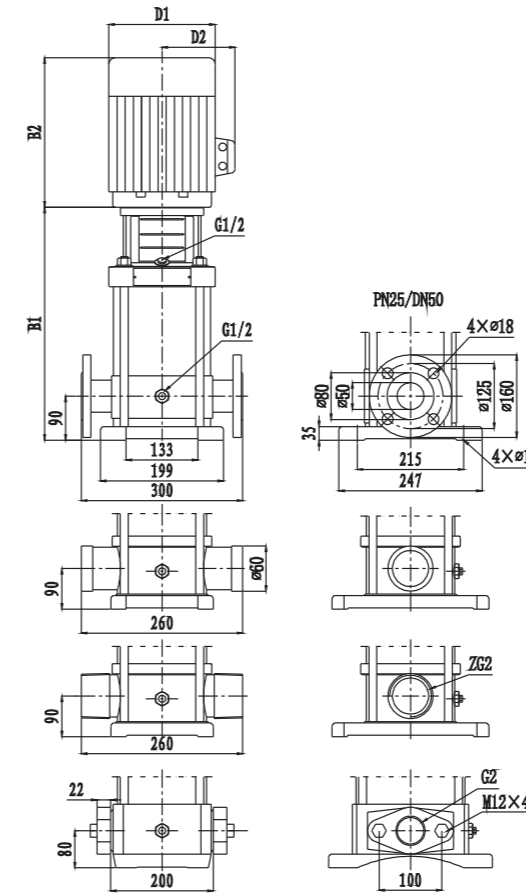
CDLF16

Performance curve



CDLF16

Installation sketch



size and weight

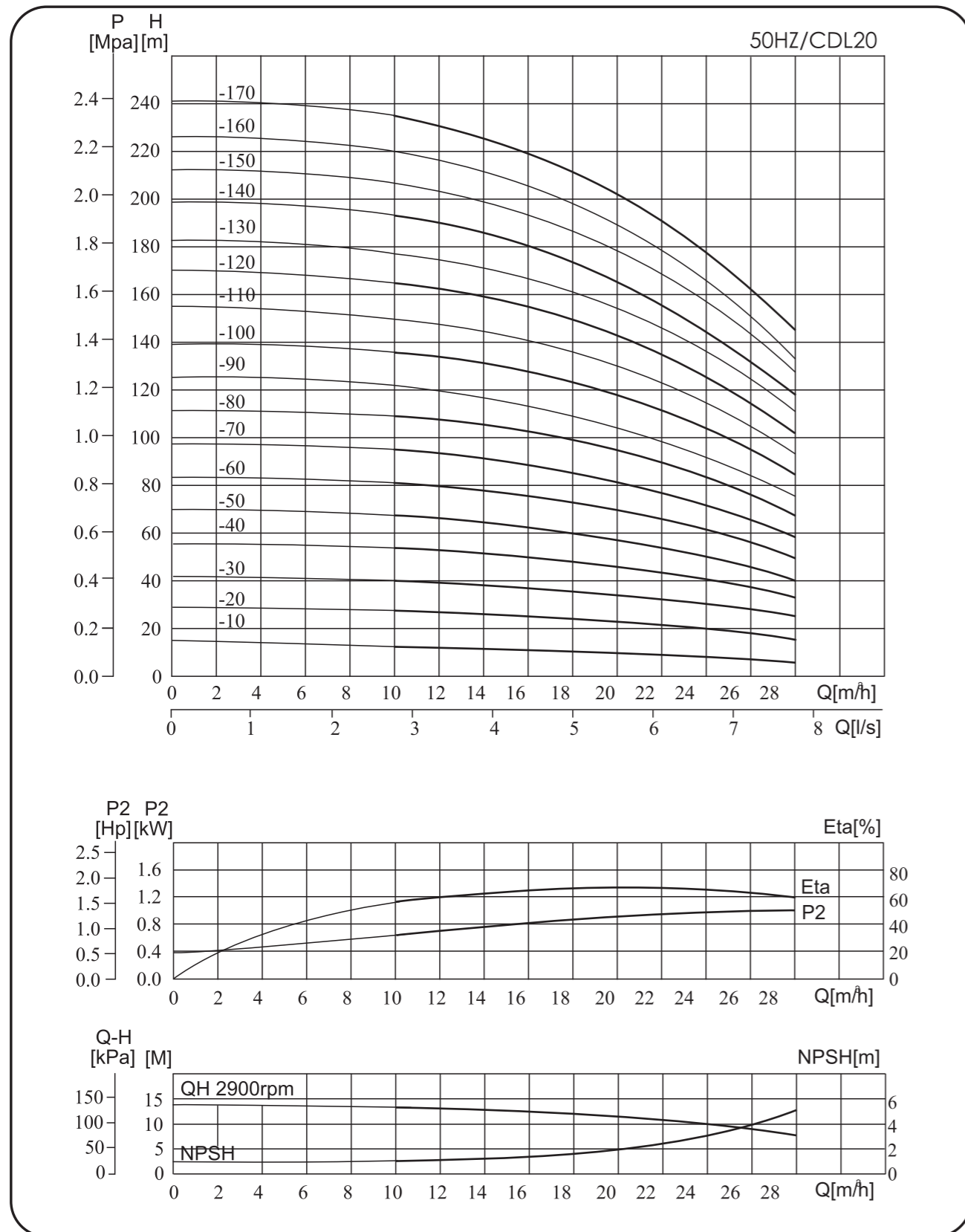
Model	Size(mm)					Weight (kg)
	B1	B2	B1+B2	D1	D2	
CDL/CDLF						
16-20	400	280	680	180	155	40
16-30	455	340	795	180	155	50
16-40	500	375	875	210	180	55
16-50	565	395	960	250	210	70
16-60	610	395	1005	250	210	75
16-70	655	395	1050	250	210	80
16-80	700	395	1095	250	210	80
16-90	785	505	1290	250	210	140
16-100	830	505	1335	330	255	140
16-120	920	505	1425	330	255	145
16-140	1010	505	1515	330	255	165
16-160	1100	505	1605	330	255	170

Performance table

Model	Motor(kw)	Q (m³/h)	8	10	12	14	16	18	20	22
CDL/CDLF										
16-20	2.2	H (m)	27	26	25	24	22	21	19	16
16-30	3.0		41	40	38	37	34	32	26	25
16-40	4.0		54	53	52	49	46	43	38	34
16-50	5.5		68	67	65	62	58	54	48	43
16-60	5.5		82	82	78	74	70	64	58	52
16-70	7.5		96	95	91	87	82	76	69	61
16-80	7.5		110	108	104	99	94	86	79	70
16-90	11		124	121	117	112	106	98	90	79
16-100	11		138	135	131	125	118	109	100	88
16-110	11		152	148	144	137	130	121	110	96
16-120	11		166	162	157	150	142	132	120	105
16-130	15		180	176	170	162	154	144	130	114
16-140	15		194	190	184	175	166	156	140	123
16-150	15		208	203	196	187	178	166	150	132
16-160	15		222	216	209	200	189	176	160	142

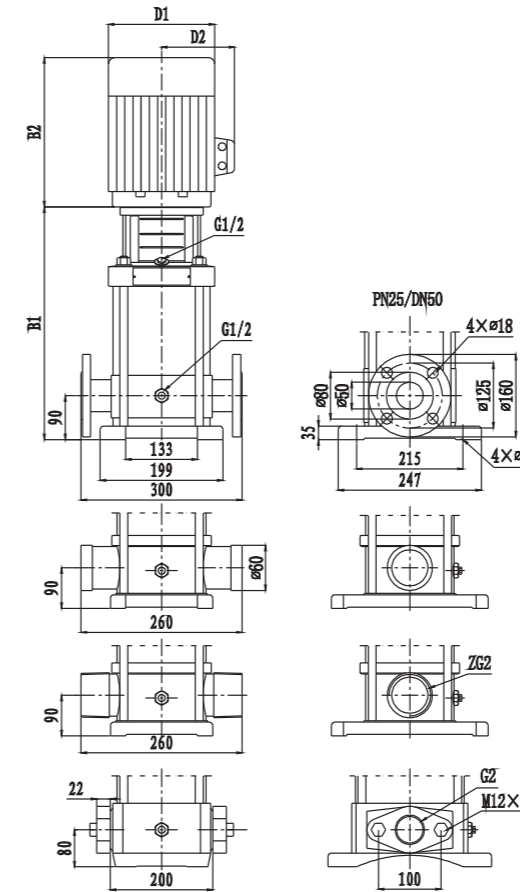
CDLF20

Performance curve



CDLF20

Installation sketch



size and weight

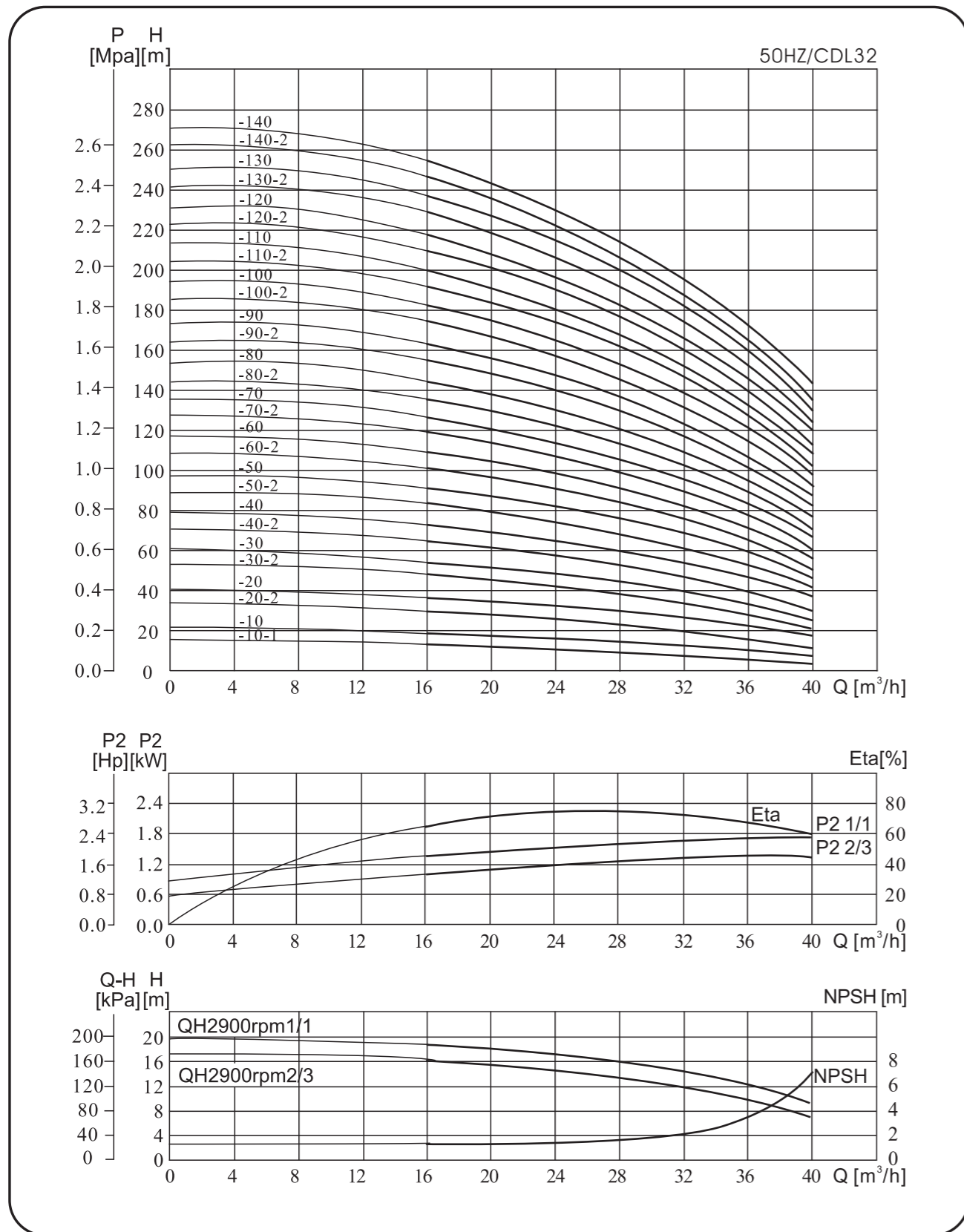
Model	Size(mm)					Weight (kg)
	B1	B2	B1+B2	D1	D2	
CDL/CDLF						
20-10	387	245	632	170	142	32
20-20	397	290	687	190	155	43
20-30	452	335	787	230	188	57
20-40	517	430	947	260	208	72
20-50	562	430	992	260	208	74
20-60	607	430	1037	260	208	82
20-70	652	430	1082	260	208	84
20-80	785	490	1275	330	255	140
20-100	875	490	1365	330	255	145
20-120	965	490	1455	330	255	160
20-140	1055	490	1545	330	255	165
20-170	1190	550	1740	330	255	190

Performance table

Model	Motor(kw)	Q (m³/h)	H (m)																				
			10	12	14	16	18	20	22	24	26	28											
CDL/CDLF																							
20-10	1.1		13.5	13	12.5	12	11	10	9	8	7	6											
20-20	2.2		27	26.5	26	25	24	23	22	20	18	15											
20-30	4.0		40	39.5	39	38	37	35	33	30	27	24											
20-40	5.5		54	53	52	51	49	47	44	41	37	33											
20-50	5.5		67	66	64	62	60	58	55	50	45	40											
20-60	7.5		81	79	77	75	73	70	66	61	55	49											
20-70	7.5		95	93	91	89	86	82	77	71	65	58											
20-80	11		109	107	105	102	99	94	89	82	75	67											
20-90	11		123	120	118	115	112	106	100	93	85	76											
20-100	11		136	134	131	128	124	118	111	103	95	85											
20-110	15		150	148	145	141	137	130	122	114	105	94											
20-120	15		164	162	158	154	149	142	133	124	114	102											
20-130	15		178	176	172	167	162	154	145	134	123	111											
20-140	15		192	189	185	180	174	166	156	145	133	119											
20-150	18.5		206	203	198	193	184	178	167	156	143	127											
20-160	18.5		220	217	212	206	198	190	178	166	152	136											
20-170	18.5		234	230	225	219	212	202	190	177	162	145											

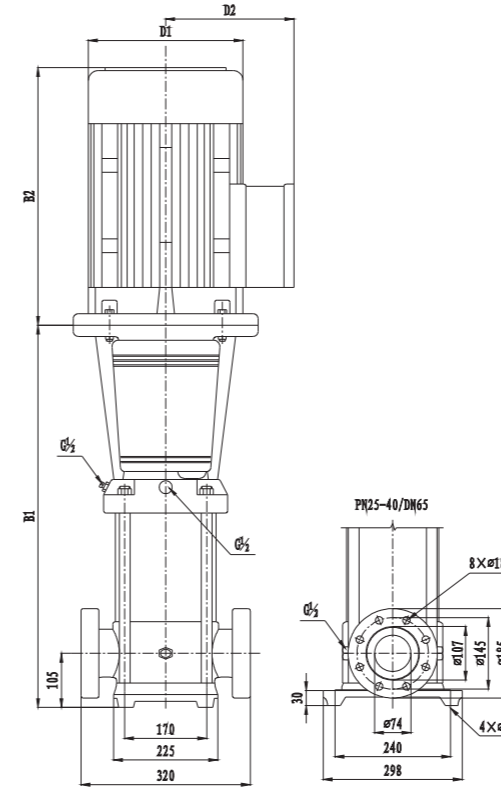
CDLF32

Performance curve



CDLF32

Installation sketch



size and weight

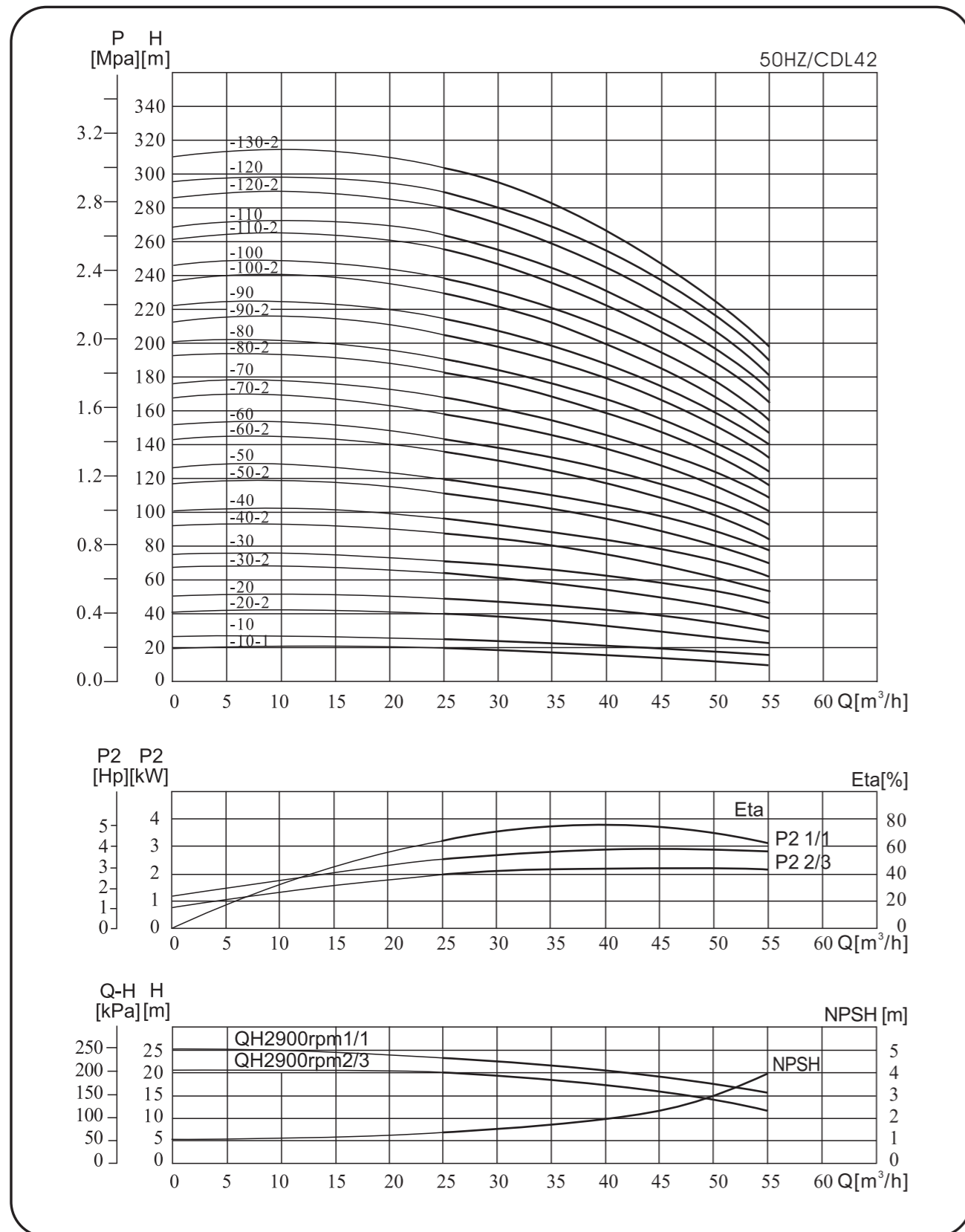
Model	Size(mm)					Weight (kg)
	B1	B2	B1+B2	D1	D2	
CDL/CDLF						
32-10-1/32-10	505	290	795	190	155	71
32-20-2/32-20	575	315/335	890/910	197/230	165/188	84
32-30-2/32-30	645	430	1075	260	208	95
32-40-2/32-40	715	430	1145	260	208	104
32-50-2/32-50	890	490	1380	330	255	174
32-60-2/32-60	960	490	1450	330	255	178
32-70-2/32-70	1030	490	1520	330	255	190
32-80-2/32-80	1100	490	1590	330	255	194
32-90-2/32-90	1170	550	1720	330	255	220
32-100-2/32-100	1240	550	1790	330	255	224
32-110-2/32-110	1310	590	1900	360	255	261
32-120-2/32-120	1380	590	1970	360	285	265
32-130-2/32-130	1450	660	2110	400	310	330
32-140-2/32-140	1520	660	2180	400	310	337

Performance table

Model	Motor(kw)	Q (m³/h)	16	20	24	28	32	36	40
CDL/CDLF									
32-10-1	1.5		14	13	12	11	9	7	4
32-10	2.2		18	17	15	14	13	11	8
32-20-2	3.0		29	28	26	23	20	16	11
32-20	4.0		36	34	32	29	27	23	18
32-30-2	5.5		47	44	41	38	33	28	21
32-30	5.5		54	51	48	44	40	35	27
32-40-2	7.5		65	62	58	53	46	40	30
32-40	7.5		72	69	65	59	53	47	37
32-50-2	11		83	79	74	68	60	52	41
32-50	11		90	86	81	74	67	59	47
32-60-2	11		101	97	90	83	74	65	51
32-60	11		108	104	97	90	81	72	57
32-70-2	15		119	114	107	98	88	78	60
32-70	15		126	121	113	105	95	85	67
32-80-2	15		136	131	123	11	102	90	71
32-80	15		144	138	130	120	109	97	77
32-90-2	18.5		154	148	140	129	117	102	82
32-90	18.5		162	156	147	136	124	109	88
32-100-2	18.5		175	166	157	146	131	115	91
32-100	18.5		182	173	164	152	138	122	98
32-110-2	22		193	184	173	164	146	128	102
32-110	22		200	191	180	168	153	135	109
32-120-2	22		211	201	189	178	160	140	113
32-120	22		218	208	196	184	167	147	120
32-130-2	30		230	218	206	193	174	153	124
32-130	30		237	225	213	200	181	160	131
32-140-2	30		247	235	222	210	189	165	135
32-140	30		255	242	229	216	196	172	142

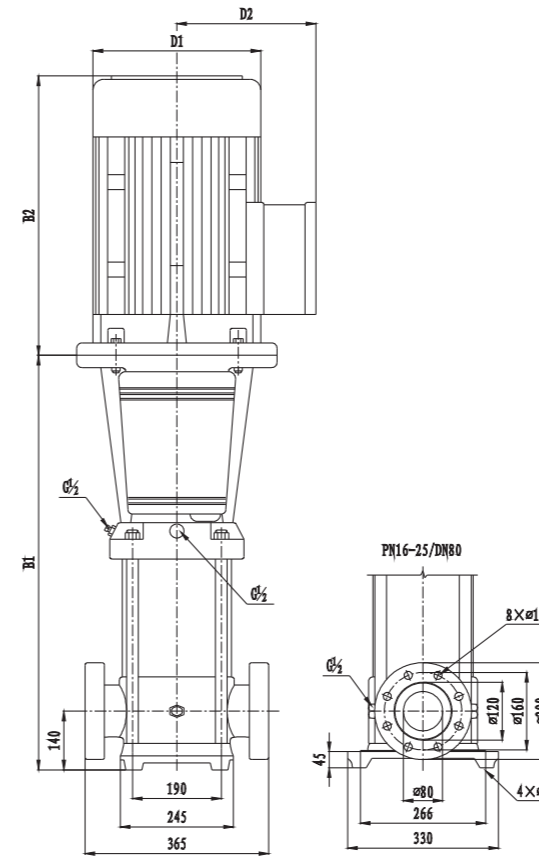
CDLF42

Performance curve



CDLF42

Installation sketch



size and weight

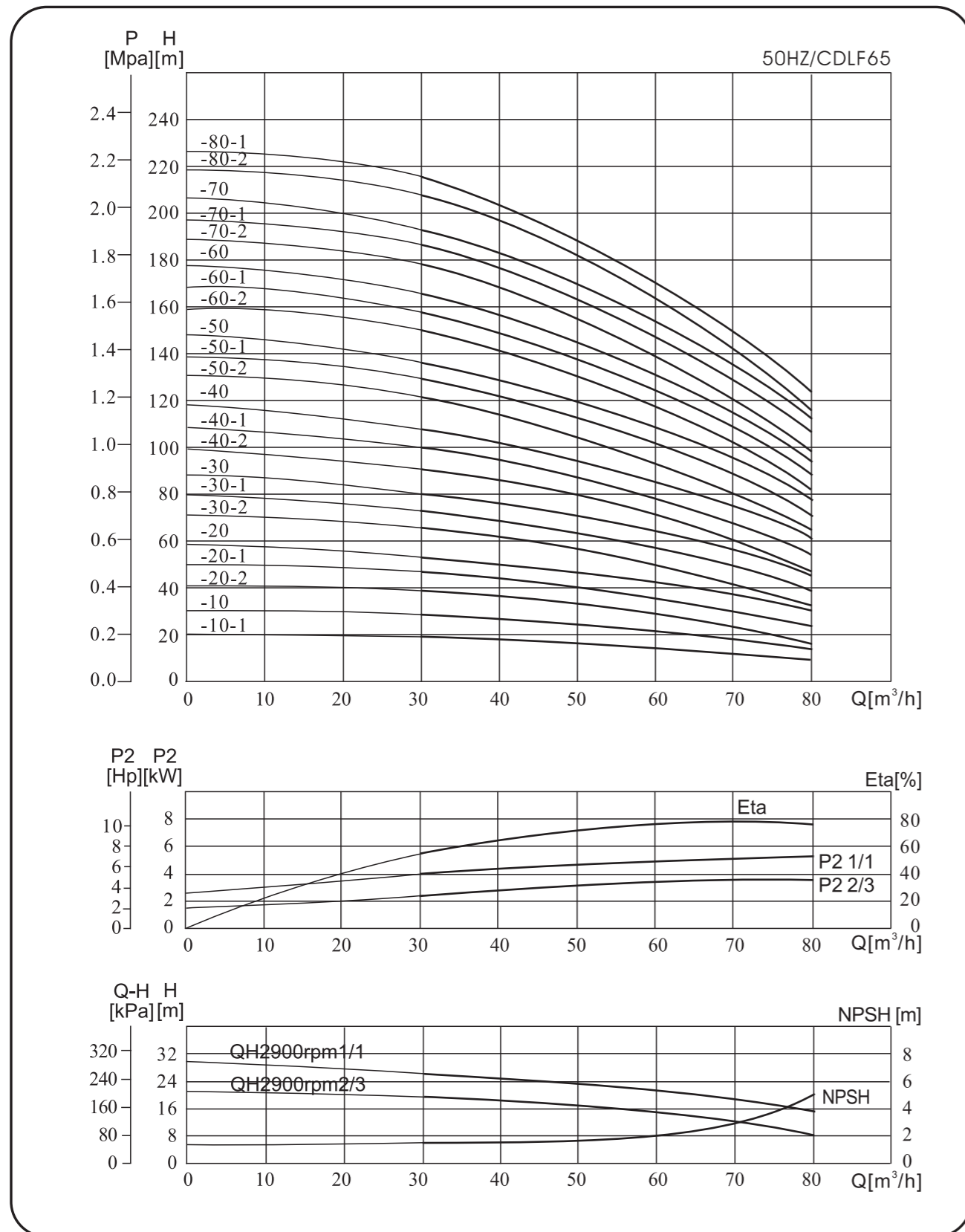
Model	Size(mm)					Weight (kg)
	CDL/CDLF	B1	B2	B1+B2	D1	
42-10-1	561	315/335	876/896	197/230	165/188	86/92
42-10						
42-20-2	641	430	1071	260	208	102/107
42-20						
42-30-2	826	490	1316	330	255	175
42-30						
42-40-2	906	490	1396	330	255	187
42-40						
42-50-2	986	550	1536	330	255	208
42-50						
42-60-2	1066	590	1656	360	285	251
42-60						
42-70-2	1146	660	1806	400	310	315
42-70						
42-80-2	1226	660	1886	400	310	319
42-80						
42-90-2	1306	660	1966	400	310	323/343
42-90						
42-100-2	1386	660	2046	400	310	347
42-100						
42-110-2	1466	700	2166	450	345	413
42-110						
42-120-2	1546	700	2246	450	345	417
42-120						
42-130-2	1626	700	2326	450	345	421

Performance table

Model	Motor(kw)	Q (m³/h)	25	30	35	40	42	45	50	55
CDL/CDLF										
42-10-1	3.0		20	19	18	17	16	15	13	11
42-10	4.0		24	23	22	21	20	19	18	16
42-20-2	5.5		40	38	36	33	32	30	27	23
42-20	7.5		48	46	44	42	41	39	35	31
42-30-2	11		63	61	58	54	52	50	44	38
42-30	11		71	69	66	63	61	58	53	47
42-40-2	15		87	84	80	75	73	69	62	54
42-40	15		95	92	88	84	81	78	71	62
42-50-2	18.5		111	107	102	96	93	88	80	69
42-50	18.5		119	115	110	105	101	97	88	78
42-60-2	22		135	130	124	117	113	108	97	85
42-60	22		143	138	132	125	122	116	106	93
42-70-2	30		158	152	146	138	134	127	115	100
42-70	30		166	161	154	146	142	135	124	109
42-80-2	30		182	175	168	159	154	146	133	116
42-80	30		190	184	176	167	162	154	141	124
42-90-2	30		205	198	190	180	174	166	150	132
42-90	37		214	207	198	188	183	174	159	140
42-100-2	37		230	221	212	200	194	185	168	147
42-100	37		238	230	220	209	203	193	177	155
42-110-2	45		255	245	236	223	217	206	188	165
42-110	45		263	255	244	232	225	214	196	173
42-120-2	45		280	270	259	245	238	226	206	181
42-120	45		289	280	268	255	247	236	216	190
42-130-2	45		305	294	282	267	259	247	225	198

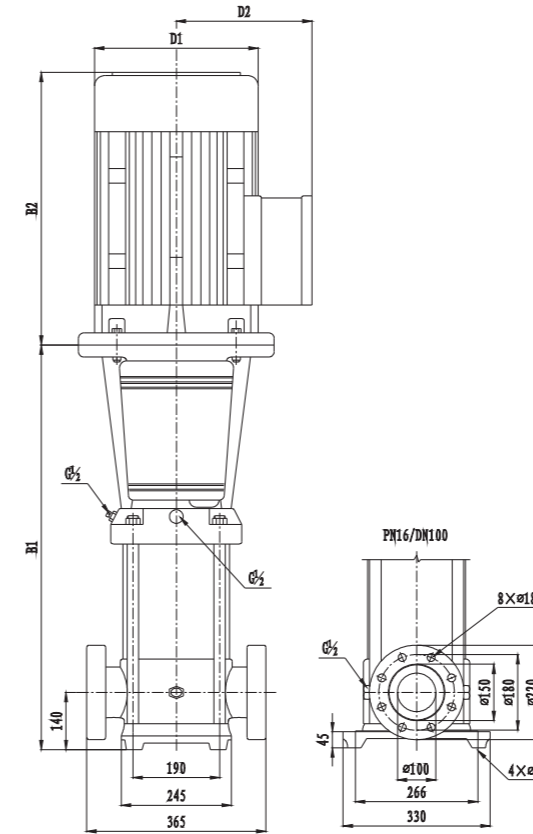
CDLF65

Performance curve



CDLF65

Installation sketch



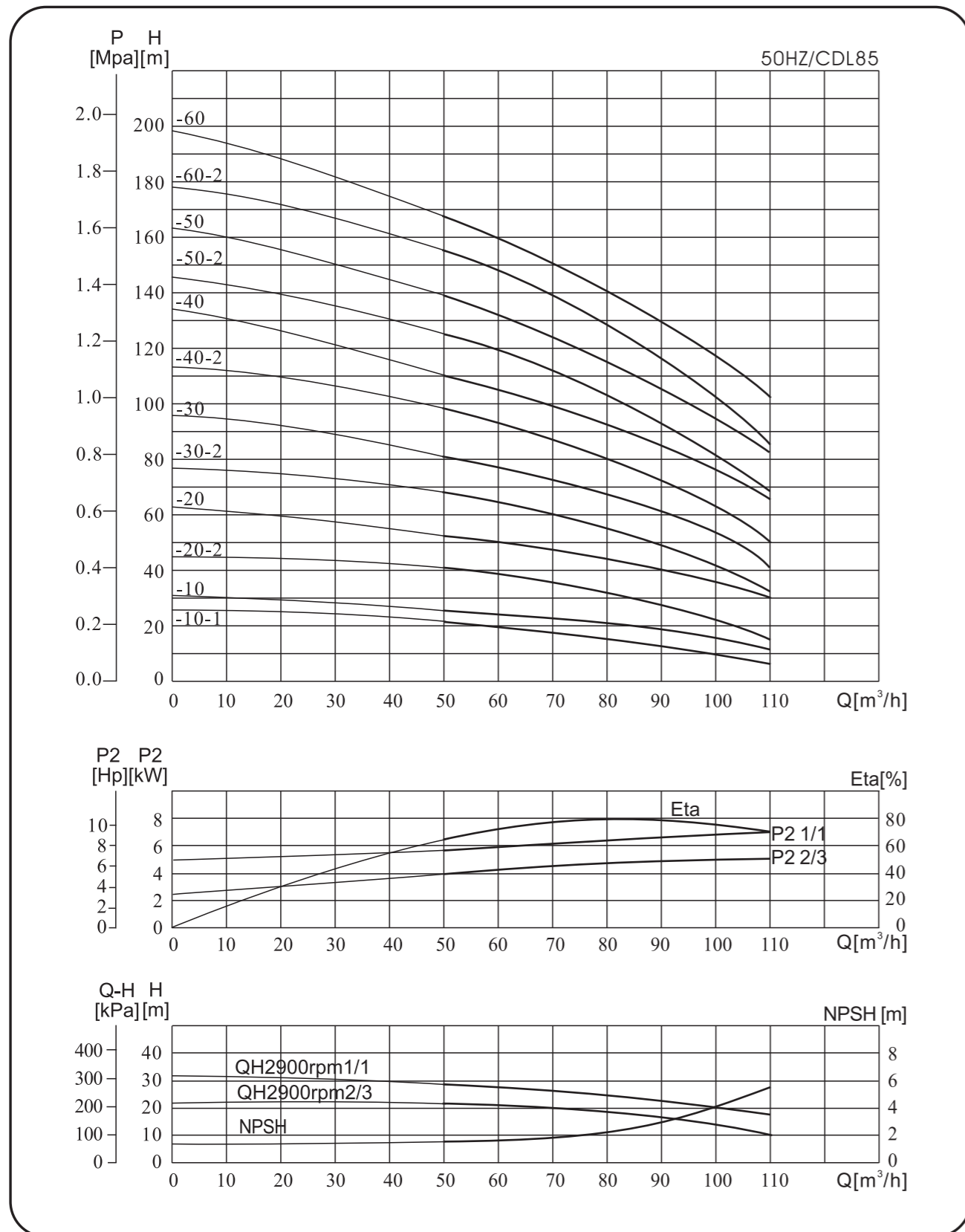
size and weight

Model CDL/CDLF	Size(mm)					Weight (kg)
	B1	B2	B1+B2	D1	D2	
65-10-1	561	335	896	230	188	105
65-10	561	430	991	260	208	110
65-20-2	644	430	1074	260	208	120
65-20-1	754	490	1244	330	255	155
65-20	754	490	1244	330	255	155
65-30-2	836	490	1326	330	255	195
65-30-1	836	490	1326	330	255	195
65-30	836	550	1386	330	255	205
65-40-2	919	550	1469	330	255	208
65-40-1	919	590	1509	360	285	260
65-40	919	590	1509	360	285	260
65-50-2	1001	660	1661	400	310	345
65-50-1	1001	660	1661	400	310	345
65-50	1001	660	1661	400	310	345
65-60-2	1084	660	1744	400	310	350
65-60-1	1084	660	1744	400	310	370
65-60	1084	660	1744	400	310	370
65-70-2	1166	660	1826	400	310	375
65-70-1	1166	660	1826	400	310	375
65-70	1166	700	1866	460	340	435
65-80-2	1248	700	1948	460	340	440
65-80-1	1248	700	1948	460	340	440

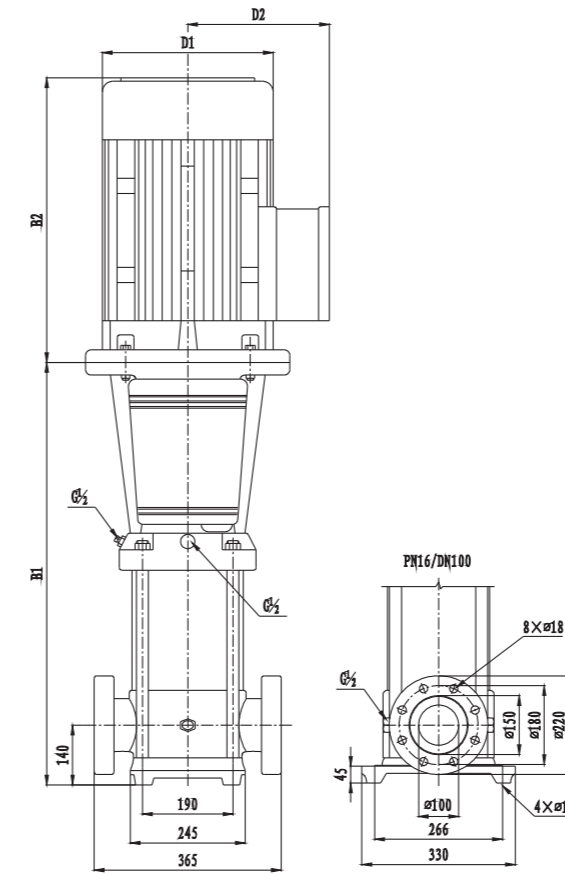
Performance table

Model CDL/CDLF	Motor(kw)	Q (m³/h)	H (m)							
			30	40	50	60	65	70	80	
65-10-1	4.0		19	18	16	14	13	11	8	
65-10	5.5		27	25	23	21	20	18	15	
65-20-2	7.5		39	36	33	29	26	23	17	
65-20-1	11		46	44	40	36	33	30	24	
65-20	11		53	51	47	43	40	37	30	
65-30-2	15		66	62	56	50	46	41	32	
65-30-1	15		73	69	63	57	53	48	39	
65-30	18.5		80	76	70	64	60	55	46	
65-40-2	18.5		92	87	80	71	66	60	47	
65-40-1	22		100	94	87	78	73	67	54	
65-40	22		107	101	94	85	80	74	61	
65-50-2	30		121	114	105	95	88	80	64	
65-50-1	30		128	121	112	102	95	87	71	
65-50	30		136	129	119	109	102	94	78	
65-60-2	30		150	142	131	118	110	101	81	
65-60-1	37		157	149	138	125	117	108	88	
65-60	37		164	156	145	132	124	115	95	
65-70-2	37		179	169	156	141	132	121	99	
65-70-1	37		186	176	163	148	139	128	106	
65-70	45		193	183	170	155	146	135	112	
65-80-2	45		207	196	182	164	154	142	116	
65-80-1	45		215	203	189	171	161	149	123	

Performance curve



Installation sketch



size and weight

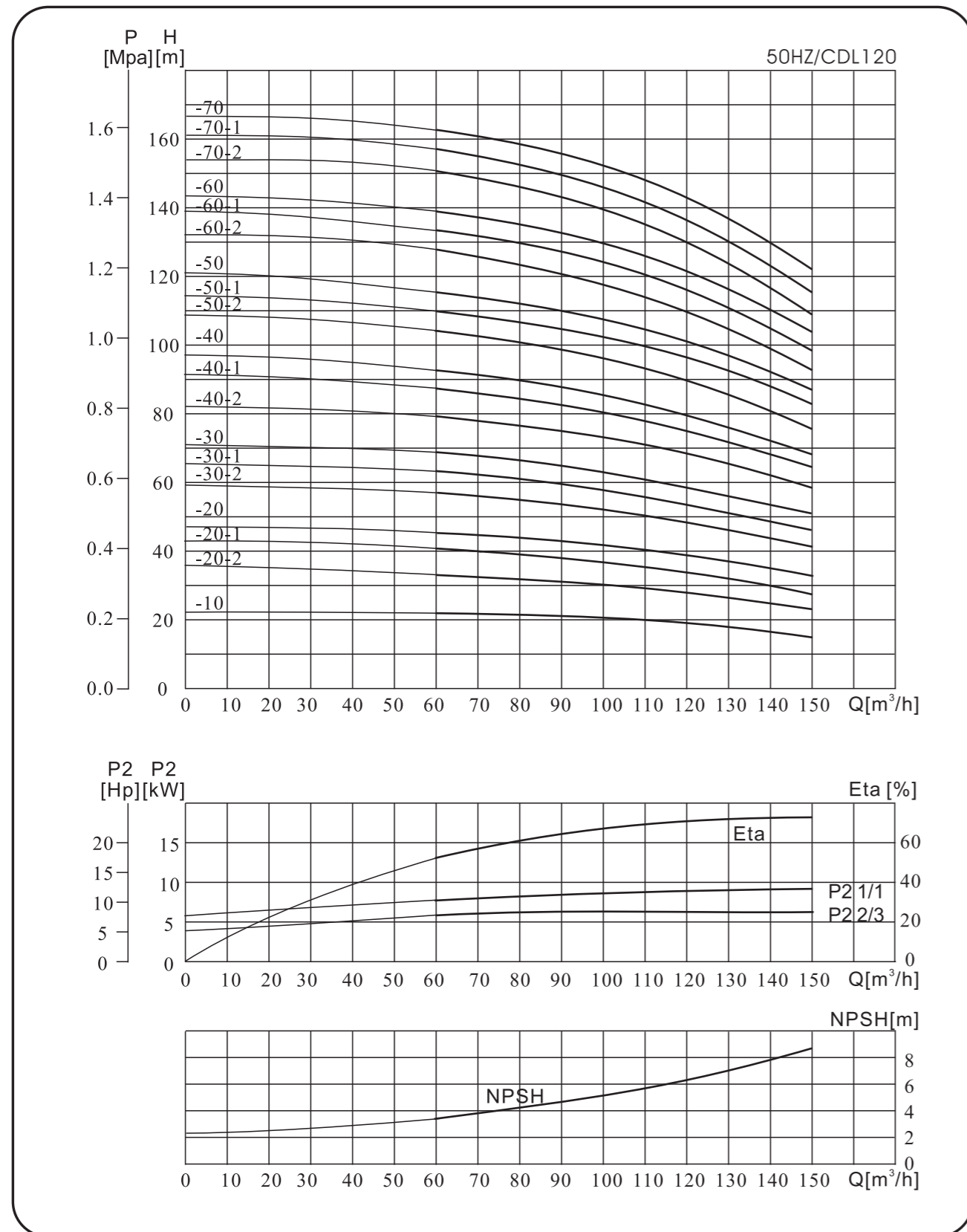
Model	Size(mm)					Weight (kg)
	B1	B2	B1+B2	D1	D2	
CDL/CDLF						
85-10-1	571	430	1001	260	208	120
85-10	571	430	1001	260	208	122
85-20-2	773	490	1263	330	255	165
85-20	773	490	1263	330	255	198
85-30-2	865	550	1415	330	255	212
85-30	865	590	1455	360	285	265
85-40-2	957	660	1617	400	310	348
85-40	957	660	1617	400	310	348
85-50-2	1049	660	1709	400	310	375
85-50	1049	660	1709	400	310	375
85-60-2	1141	700	1841	460	340	438
85-60	1141	700	1841	460	340	438

Performance table

Model CDL/CDLF	Motor(kw)	Q (m ³ /h)	H (m)									
			50	60	70	80	85	90	100	110		
85-10-1	5.5		22	19	17	16	14	13	10	6		
85-10	7.5		25	24	22	21	20	19	16	12		
85-20-2	11		41	39	36	32	30	28	22	15		
85-20	15		53	50	47	44	41	40	36	30		
85-30-2	18.5		68	65	60	55	52	49	41	32		
85-30	22		81	77	72	67	64	62	55	48		
85-40-2	30		98	93	87	80	75	72	62	50		
85-40	30		110	105	100	92	86	84	76	66		
85-50-2	37		126	120	113	104	98	93	81	68		
85-50	37		139	131	124	115	110	106	94	83		
85-60-2	45		155	148	139	129	122	117	102	86		
85-60	45		168	160	150	141	134	130	117	103		

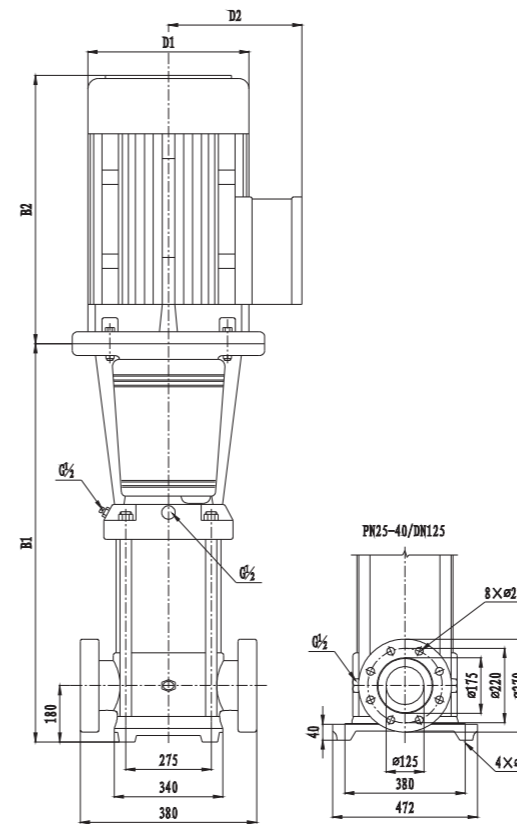
CDLF120

Performance curve



CDLF120

Installation sketch



size and weight

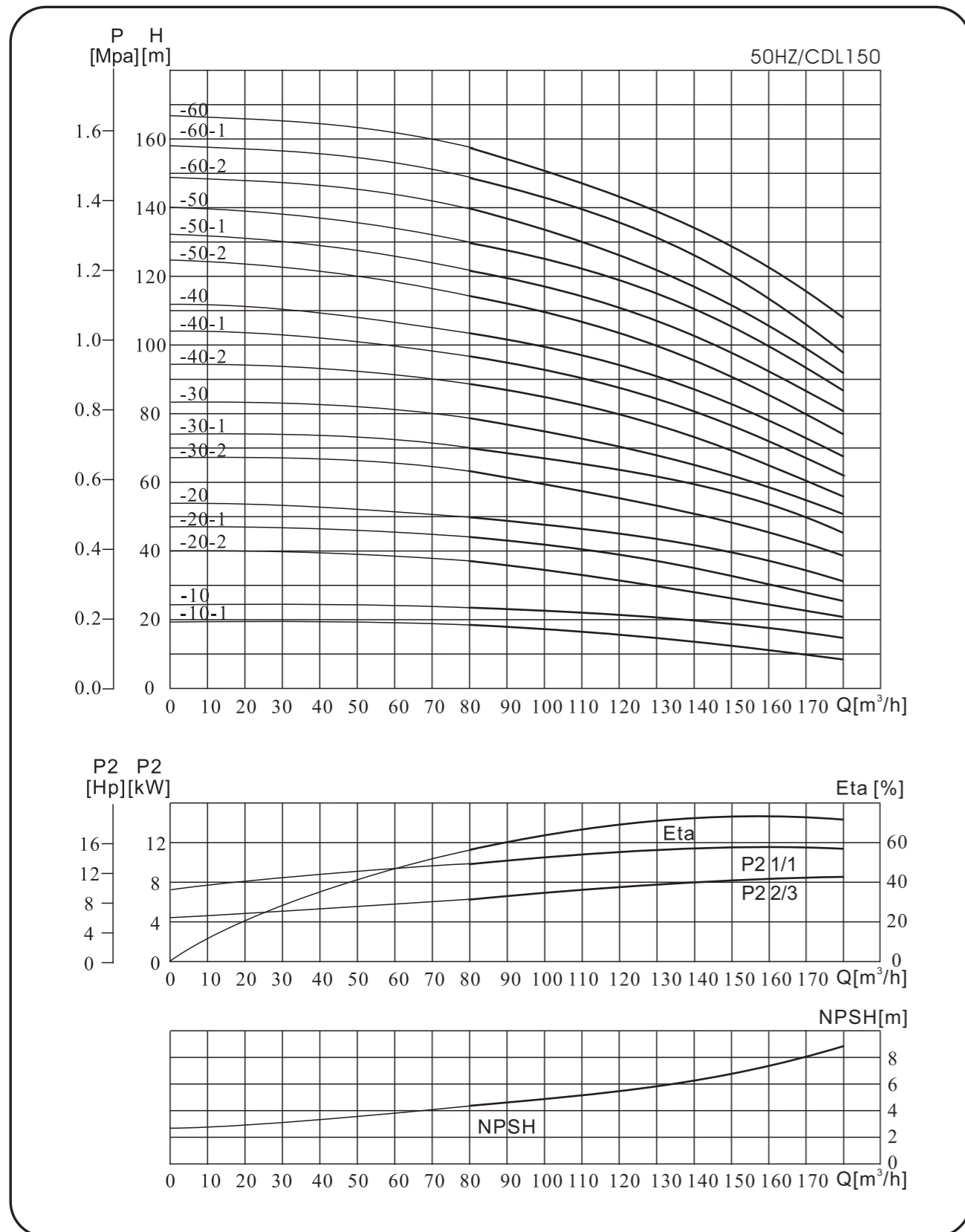
Model	Size(mm)					Weight (kg)
	B1	B2	B1+B2	D1	D2	
120-10	840	490	1330	330	255	230
120-20-2	1000	490	1490	330	255	245
120-20-1	1000	550	1550	330	255	250
120-20	1000	590	1590	360	285	285
120-30-2	1160	660	1820	400	310	360
120-30-1	1160	660	1820	400	310	360
120-30	1160	660	1820	400	310	360
120-40-2	1320	660	1980	400	310	400
120-40-1	1320	660	1980	400	310	400
120-40	1320	700	2020	460	340	460
120-50-2	1480	700	2180	460	340	470
120-50-1	1480	700	2180	460	340	470
120-50	1510	770	2280	540	370	575
120-60-2	1670	770	2440	540	370	585
120-60-1	1670	770	2440	540	370	585
120-60	1670	845	2515	580	410	705
120-70-2	1830	845	2675	580	410	715
120-70-1	1830	845	2675	580	410	715
120-70	1830	845	2675	580	410	715

Performance table

Model	Motor(kw)	Q (m³/h)	60	70	80	90	100	110	120	130	140	150
120-10	11	H (m)	22	21.8	21.6	21	20.5	19.5	18.5	17	16	15
120-20-2	15		34	33.6	33	31	30.2	30	28.5	27	25	24
120-20-1	18.5		41	40	39.5	38.5	37	36.5	34.5	32.5	30	27.5
120-20	22		46	45	44.5	43.5	42.4	41	40	38	36	33.5
120-30-2	30		57	56	55	53.5	52	51	49	46.5	43.5	41
120-30-1	30		64	63	62	60	58.5	57.5	55.5	52	49	46
120-30	30		69.5	68.5	67.5	66	64.4	62.5	61	57.5	54.5	51
120-40-2	37		80.5	79	78	76	73.5	72	69	66	61.5	58
120-40-1	37		87	86	84.5	82	80	78	76	72	68	64.5
120-40	45		92.5	91	90	88	85.5	83	81	77	73	68.5
120-50-2	45		104.5	103	101	99	96	93	90	85.5	80.5	75.5
120-50-1	45		110.5	109	107.5	105	102	100	97	92	86.5	83
120-50	55		115.5	114	113	110	107.5	104.5	101.5	96	91	86
120-60-2	55		128	125.5	123	121	117.3	113.5	110	104.5	98.5	92.5
120-60-1	55		134	132	130.5	127	124	121	118	111	105	100
120-60	75		139	137	135	132	128.8	126	123	116	110	104
120-70-2	75	151	148	145.5	143	138.6	134	130	123.5	116.5	109	
120-70-1	75	156.5	154	152	148.5	144.5	141	137.5	130	123	116.5	
120-70	75	162.5	160.5	158.5	155	151	148	145	137	129	123	

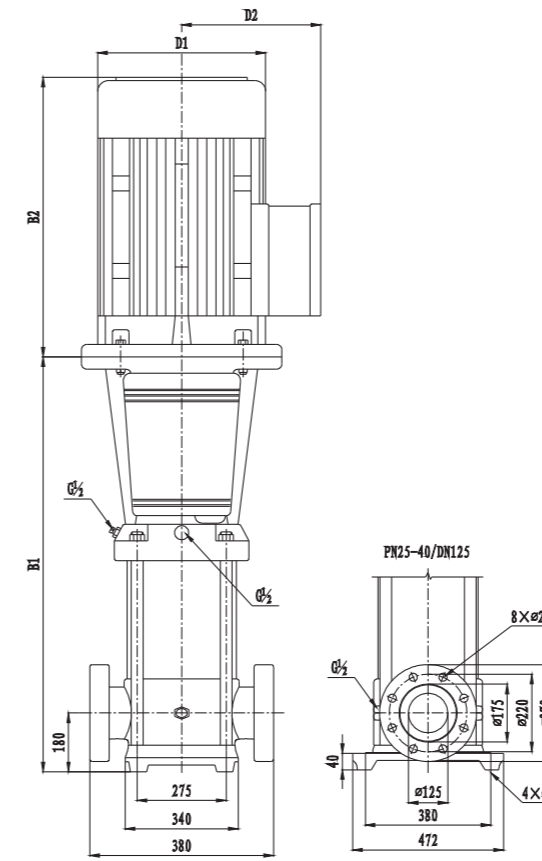
CDLF150

Performance curve



CDLF150

Installation sketch



size and weight

Model	Size(mm)					Weight (kg)
	CDL/CDLF	B1	B2	B1+B2	D1	
150-10-1	840	490	1330	330	255	230
150-10	840	490	1330	330	255	235
150-20-2	1000	550	1550	330	255	250
150-20-1	1000	590	1590	360	285	295
150-20	1000	660	1660	400	310	350
150-30-2	1160	660	1820	400	310	360
150-30-1	1160	660	1820	400	310	360
150-30	1160	660	1820	400	310	385
150-40-2	1320	700	2020	460	340	460
150-40-1	1320	700	2020	460	340	460
150-40	1350	770	2120	540	370	560
150-50-2	1510	770	2280	540	370	570
150-50-1	1510	845	2355	580	410	690
150-50	1510	845	2355	580	410	690
150-60-2	1670	845	2515	580	410	700
150-60-1	1670	845	2515	580	410	700
150-60	1670	845	2515	580	410	700

Performance table

Model CDL/CDLF	Motor(kw)	Q (m³/h)	H (m)												
			80	90	100	110	120	130	140	150	160	170	180		
150-10-1	11		18.3	17.8	17.3	17	16	15	14	12.5	11	10	8.5		
150-10	15		24	23	22.5	22	21.5	20.5	20	18.5	17	16	15		
150-20-2	18.5		37	35.5	34	33	32	31	29	27.5	26	23	21		
150-20-1	22		44.3	43	42	40	39	38.5	37.5	35	33	30	27		
150-20	30		50	49	48	47	45.5	44	42	40	37	34	32		
150-30-2	30		63.5	61	59	57.5	56	54.5	53	49	45.5	42	39		
150-30-1	37		70	68	67	65	63	62	60	56	53	49	45		
150-30	37		78	76.5	75	73	70.5	68	66	63	59	55	50.5		
150-40-2	45		89	87	84	81.5	79	77	74.5	70.5	65.5	60	56		
150-40-1	45		96.5	94	91.5	89	86.5	84	81.5	77	72.5	67	62		
150-40	55		104	102	100	97	95	91	88	84	79.5	74	68		
150-50-2	55		115.5	112	109	106	102.5	100	97	92	86	79	73.5		
150-50-1	75		122.5	119.5	117	113.5	111.5	107.5	104.5	99	93.5	87	80		
150-50	75		130	127.5	125	121	119	115	111.5	106.5	101	94.5	86.5		
150-60-2	75		140	137	133	130	126	121	118	112	106	98	91		
150-60-1	75		148.5	145	141.7	137.5	135	131	127	120.5	114.5	106.5	97.5		
150-60	75		157	153	149	145	142	139.5	137	130	123.5	116	109		



Zhejiang Zhili Water Supply Equipment Co., Ltd.

*ADD: No.799ZhangbaoEastRoad,Yongjia County,
Wenzhou City,Zhejiang Province, China
TEL:+86-0577-66985222 TEL:+86-0577-66978222
E-MAIL:jimmy@zhili-pump.com
[JimmyPan] Technical Sales Director
WhatsApp:+86-17746620126
Mobile:+86-17746620126*
